

2017 Coordinated Plan



What is the *Coordinated Plan*?

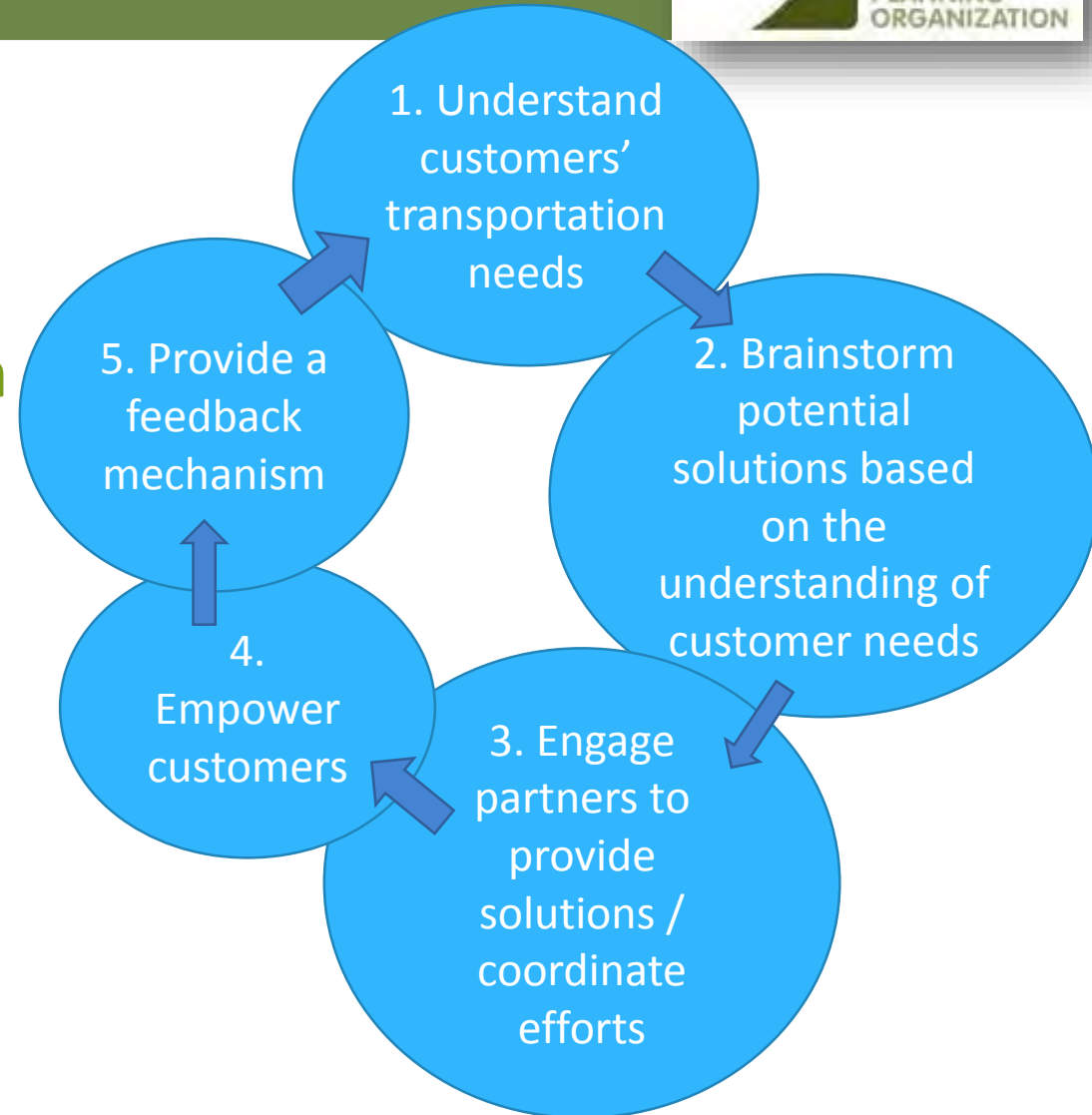
- Identifies the transportation needs of individuals with disabilities, older adults, and people with low incomes, provides strategies for meeting these needs; and
- Prioritizes transportation services for funding and implementation
- Current *Coordinated Plan* adopted in December 2013



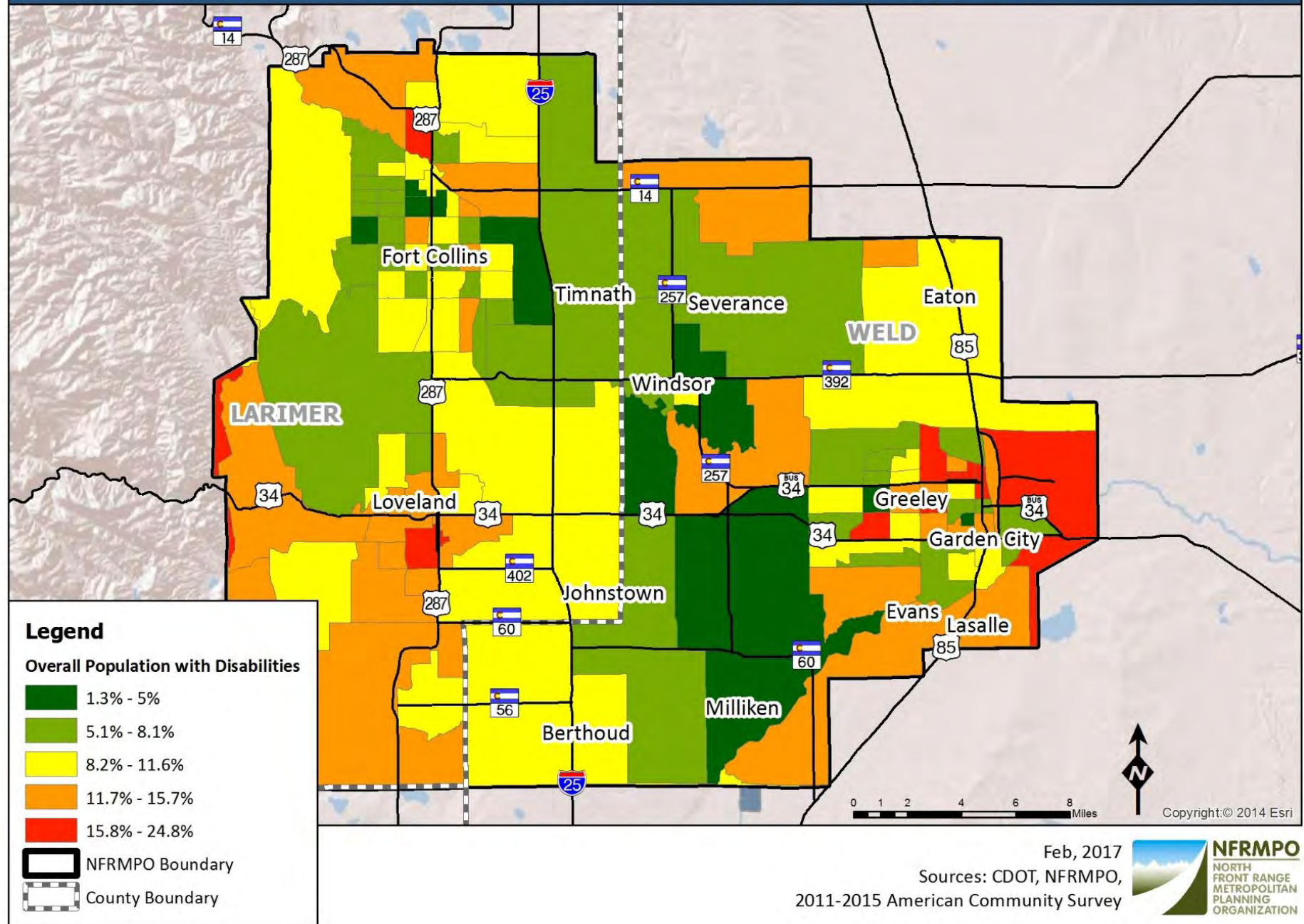
Features of the Coordinated Plan



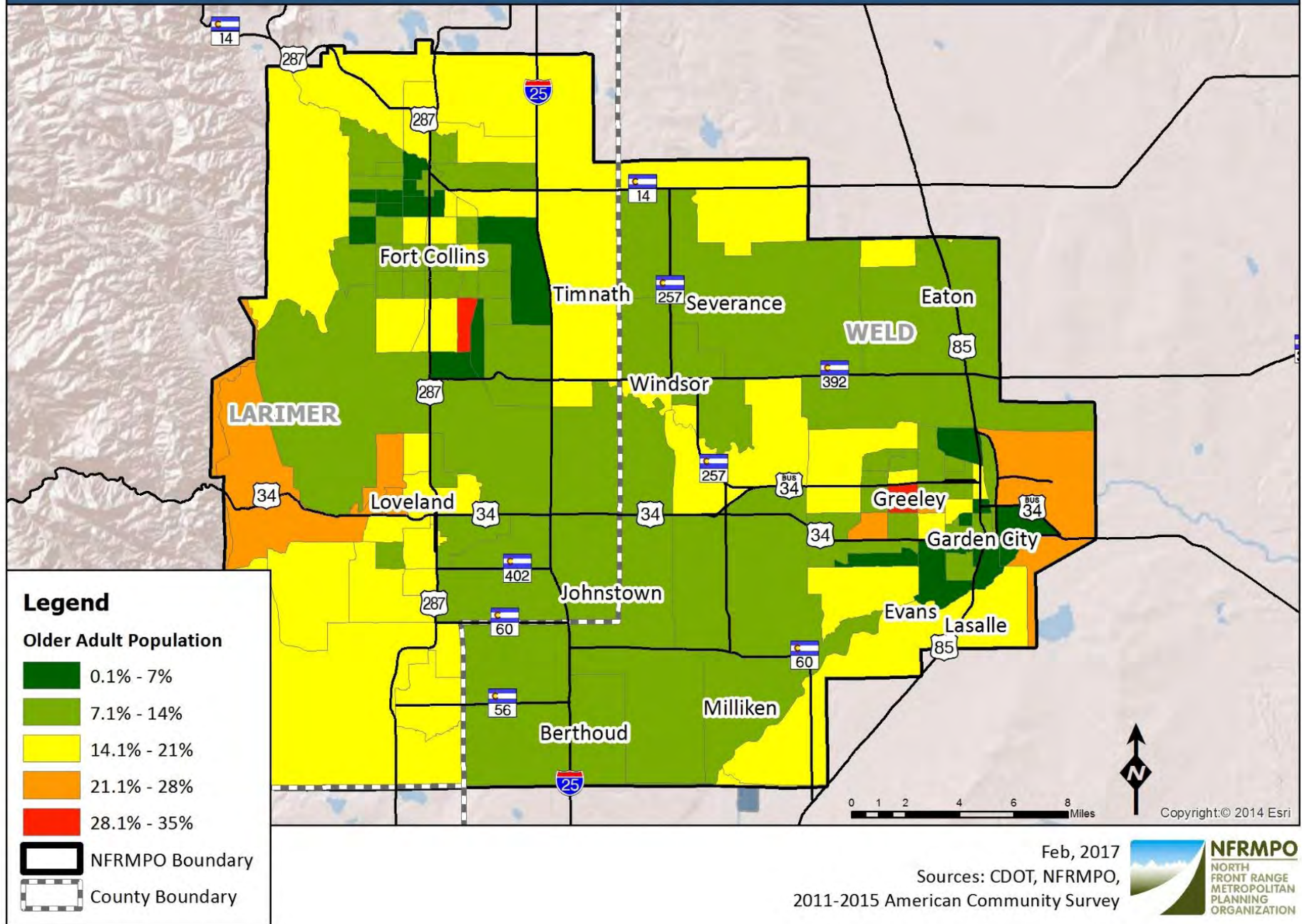
- An assessment of **transportation needs** for individuals with disabilities, seniors, and those with low incomes;
- An assessment of **available transportation services** that identifies current providers;
- Strategies to address the **identified gaps between current services and needs**, as well as opportunities to improve efficiencies in service delivery; and
- **Priorities** for implementing strategies.



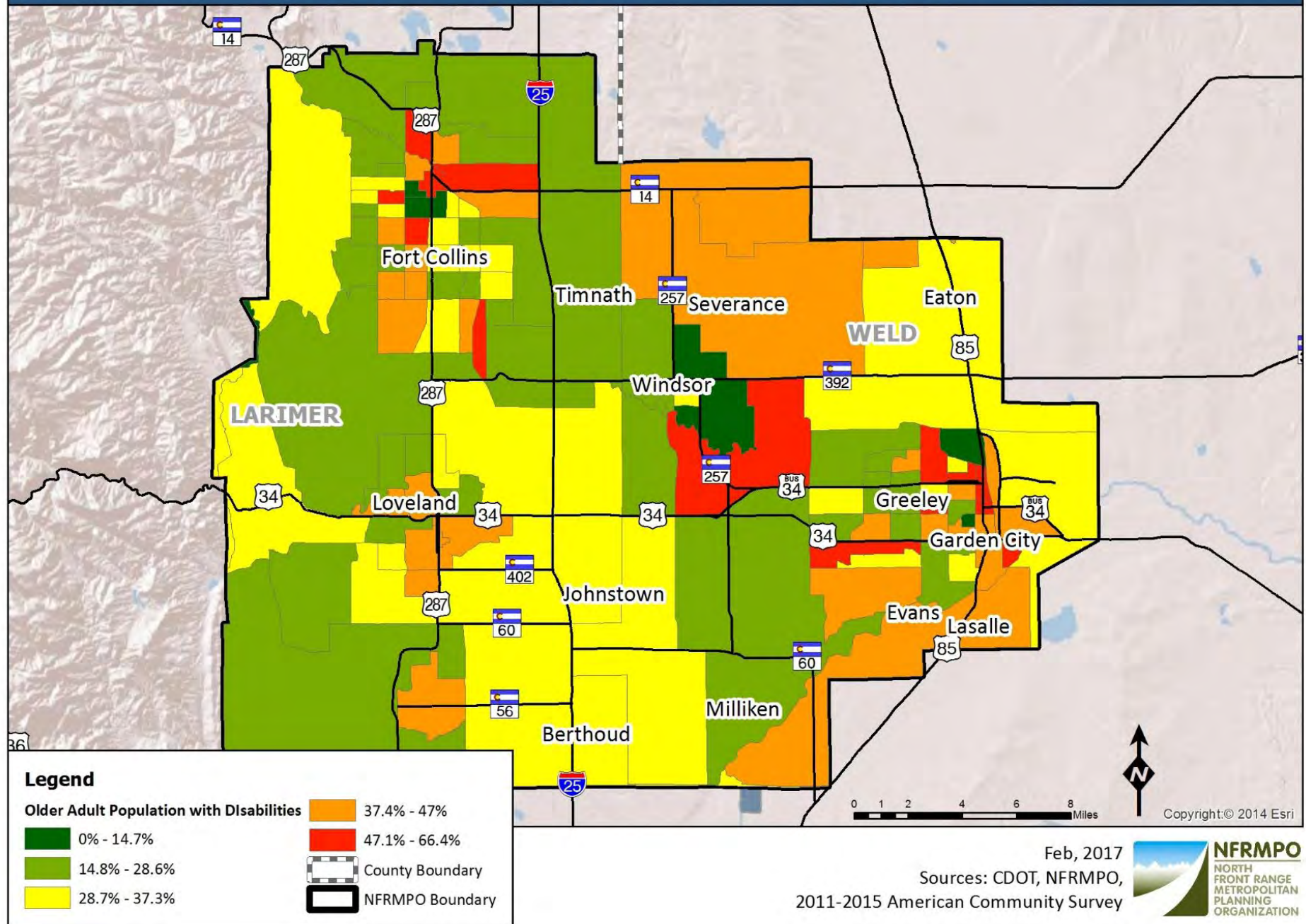
Total Population with Disabilities



Older Adult Population



Older Adult Population with Disabilities



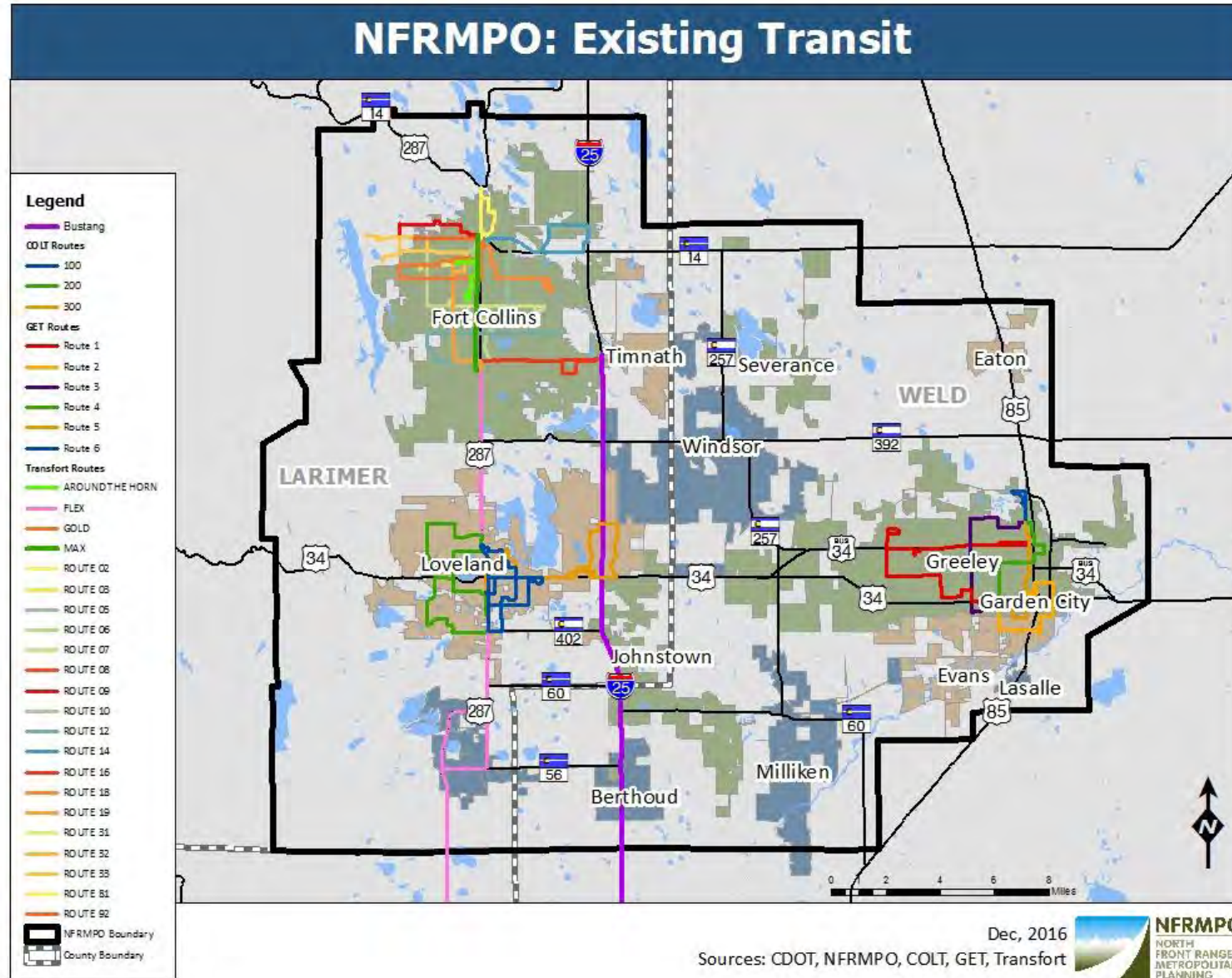
Transportation needs

- Design outreach program to discuss with all populations, agencies, and providers by:
 - Attending events at activity centers
 - Senior Centers
 - Board Meetings
 - Reaching out to caregivers
 - Meeting with advocacy organizations
 - Suggestions?
 - Survey



Available Transportation Services

- Identify existing transit options and services

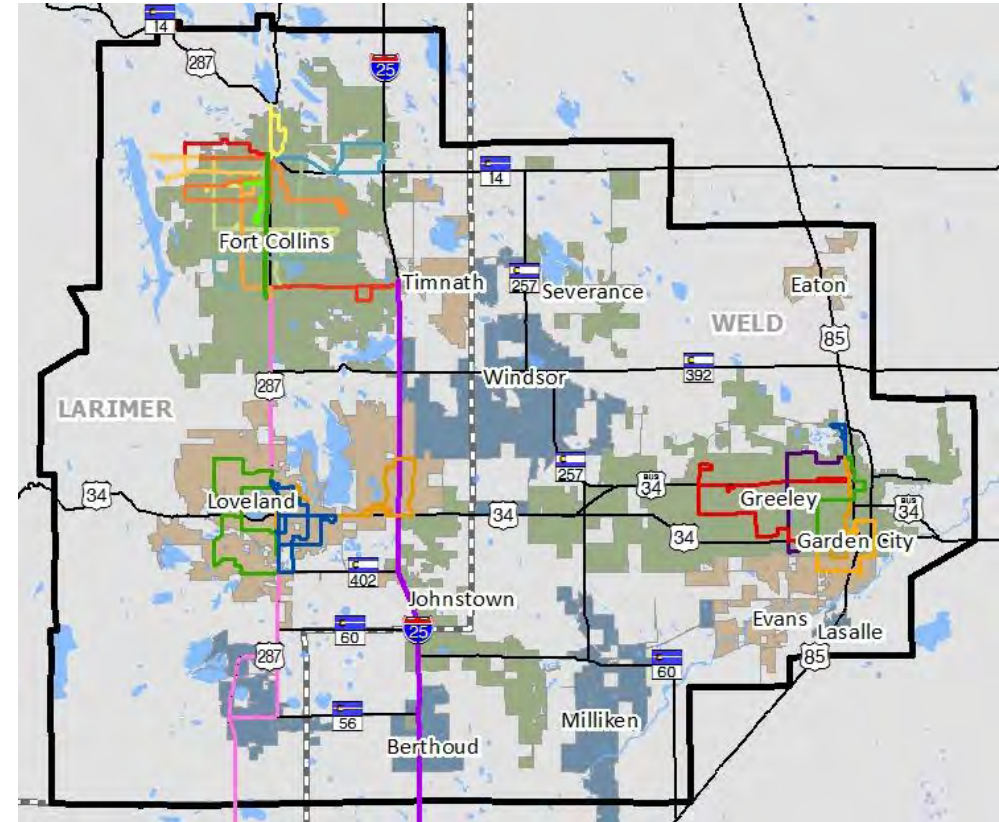


Helping Hands for Seniors



Identified gaps

- Lack of transportation *from and within* surrounding Towns (Severance, Milliken, Johnstown, Windsor, etc.) to Fort Collins, Greeley, Loveland
- Better and more regionally-coordinated trainings
- No public transit in unincorporated portions of the counties
 - Look at outcomes of Larimer County's *Senior Transportation Needs Report*





Larimer County SENIOR TRANSPORTATION NEEDS REPORT.

FEHR PEERS



Strategies for Identified gaps

- *Technology* – Uber, Lyft, social networks
- *Volunteer services* (SAINT, Senior Resource Services, etc.)
- *Region-wide Training* (National Transit Institute, Community Transportation Association of America, Federal Transit Administration, etc.)
- *Partnerships* – e.g. what are the outcomes of the Larimer County's *Senior Transportation Needs Report*?

For more information:

Alex Gordon

Transportation Planner II/Mobility Coordinator

(970) 416-2023

agordon@nfrmpo.org