

Community Advisory Committee (CAC)
Long Range Planning Subcommittee
AGENDA

August 12, 2021
6:00 – 7:00 p.m.

Call-in information:
(571) 317-3112
Code: 194-437-133

<https://www.gotomeet.me/NFRMPO/nfrmpo-community-advisory-committee>

1. Call Meeting to Order, Welcome, Introductions
 2. Review of Agenda and Previous Meeting Notes
-

Discussion items:

- 1) **What is the RTP?**
Explain the RTP, its purpose, and what is included
 - 2) **Role of the Long Range Subcommittee**
Discuss member responsibilities – help define the “so what”
 - 3) **Outreach**
Discuss how to get the public involved
 - 4) **Next Steps**
What will staff and members do before the next meeting?
-

3. Next Long Range Planning Subcommittee Meeting: TBD

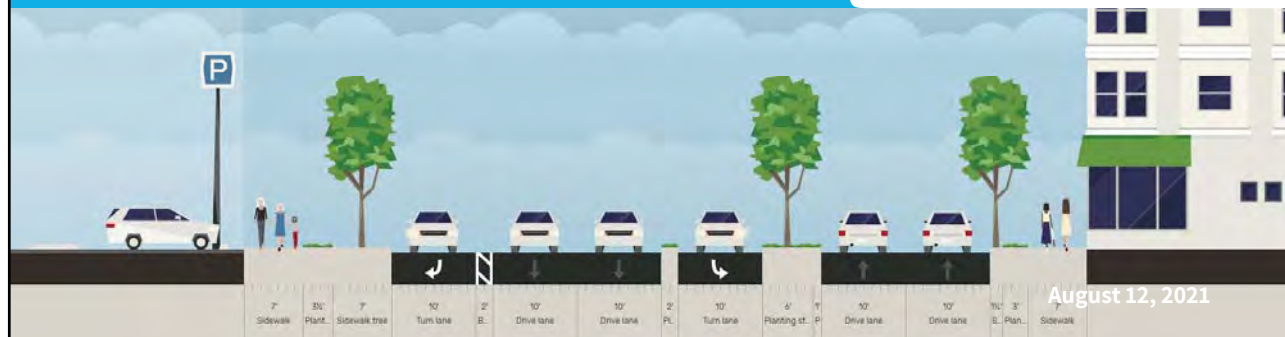
**For any questions or accommodations, please contact AnnaRose Cunningham
at arcunningham@nfrmpo.org or (970) 818-9497.**

Regional Transportation Plan

Long Range Planning Subcommittee



North Front Range
Metropolitan
Planning
Organization



Agenda



North Front Range
Metropolitan
Planning
Organization

1. What is the RTP?
2. What is the role of the Subcommittee?
3. How do we include the public?
4. Next Steps

What is the RTP?



- Updated every four years
- Must meet air quality standards
- Considers all transportation, both public and private
- Prioritizes strategies and projects based on available funding, and regional goals, performance measures, and targets



3

• <https://nfrmpo.org/rtp/>

Long Range Plan

What is the RTP?




1. Identification of transportation facilities
2. Performance measures and targets
3. System performance report
4. Mitigation activities
5. Financial plan
6. Operational and management strategies
7. Capital investment and other strategies
8. Transportation and transit enhancement activities

4

Long Range Plan

What is the RTP?




Existing System

1. Identification of transportation facilities
2. Performance measures and targets
3. System performance report

4. Mitigation activities
5. Financial plan
6. Operational and management strategies
7. Capital investment and other strategies
8. Transportation and transit enhancement activities

5
Long Range Plan

What is the RTP?



1. Identification of transportation facilities
2. Performance measures and targets
3. System performance report
4. Mitigation activities
5. Financial plan

Future System

6. Operational and management strategies
7. Capital investment and other strategies
8. Transportation and transit enhancement activities

6
Long Range Plan

What is the RTP?



How do we get there?

1. Identification of transportation facilities
2. Performance measures and targets
3. System performance report
4. Mitigation activities
5. Financial plan
6. Operational and management strategies
7. Capital investment and other strategies
8. Transportation and transit enhancement activities

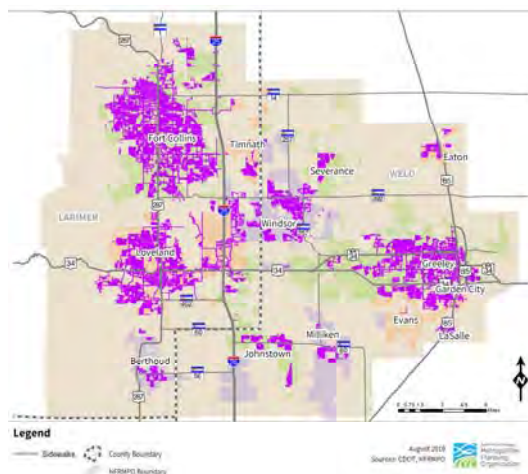
7

Long Range Plan

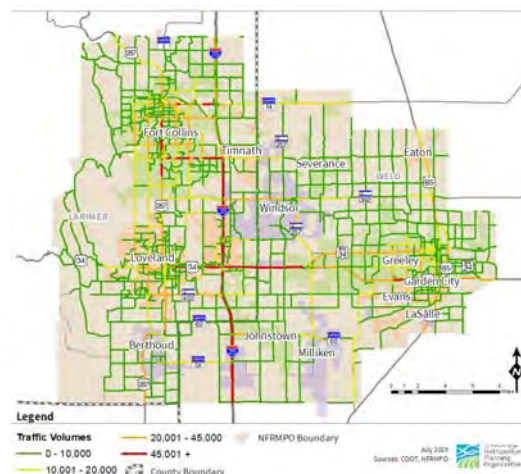
Examples of Current Analyses



Current Sidewalk Network

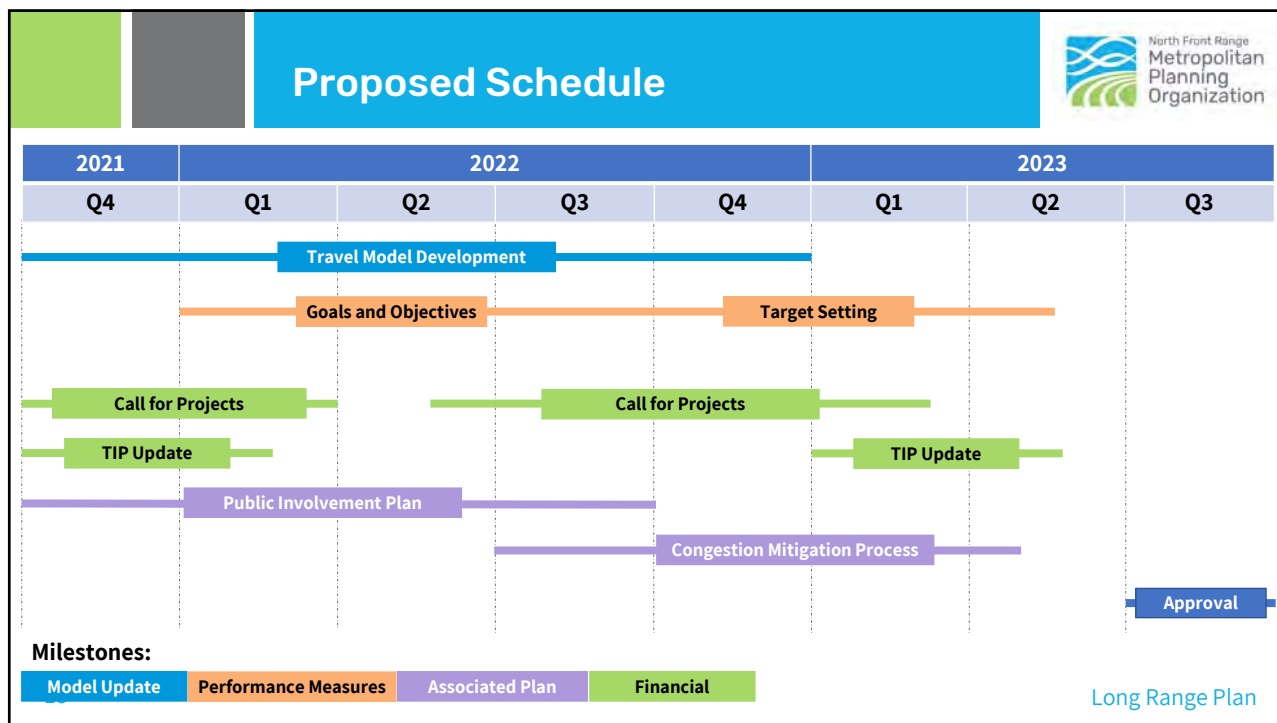
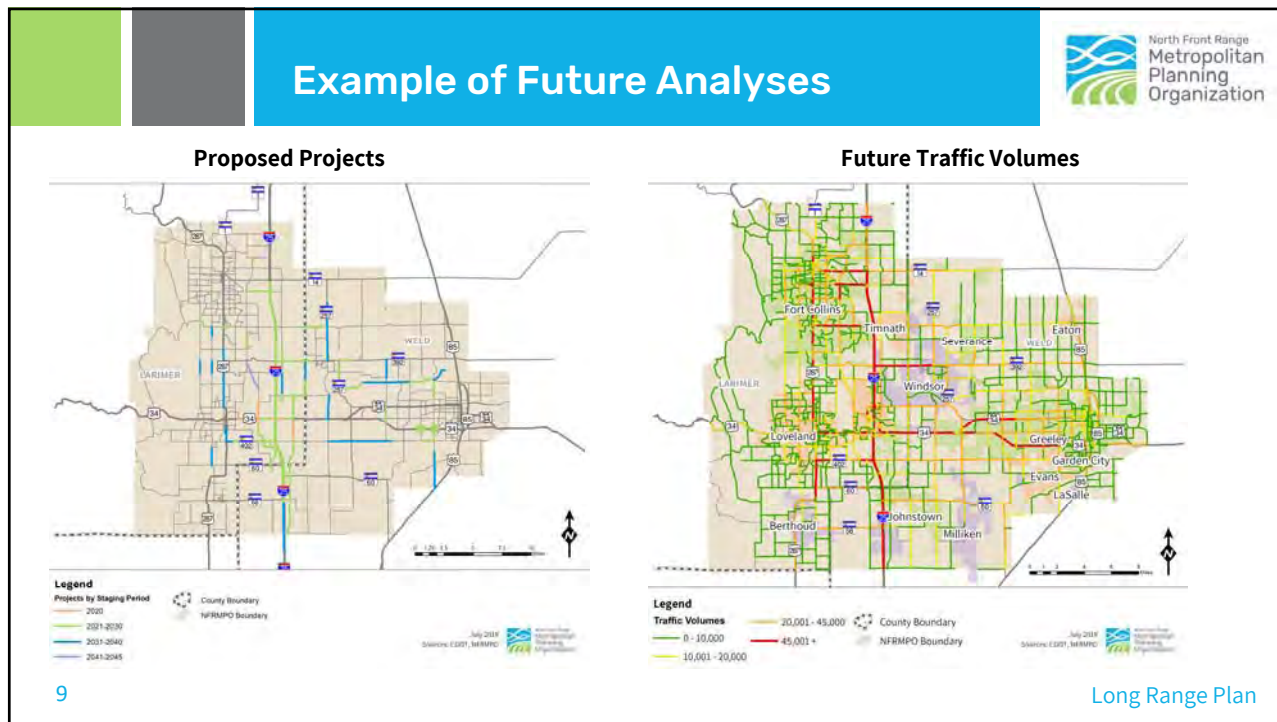


Current Traffic Volumes




8

Long Range Plan




So what?



- Plan must be **fiscally constrained**
- Plan must be **multimodal** (not just roadways)
- Plan must include a **robust outreach and engagement** effort
- Plan balances local and regional priorities

11Long Range Plan

Subcommittee Role



- Draft vision and goals for the RTP
- Identify the “so what” of our data
- Translate topics and ideas to the general public
- Discuss strategies for prioritizing projects/strategies/initiatives

12Long Range Plan

2040 Regional Transportation Plan Goals, Objectives, Performance Measures, and Targets

Value Statement
We seek to provide a multi-modal transportation system that is safe, as well as socially and environmentally sensitive for all users that protects and enhances the region's quality of life and economic vitality.

Adopted on:
September 4, 2014

	Goal 1 ECONOMIC DEVELOPMENT/QUALITY OF LIFE			Goal 2 MOBILITY			Goal 3 MULTI-MODAL			Goal 4 OPERATIONS			
MPO GOAL	Foster a transportation system that supports economic development and improves residents' quality of life			Provide a transportation system that moves people and goods safely, efficiently, and reliably			Provide a multi-modal system that improves accessibility and transportation system continuity			Optimize operations of transportation facilities			
NATIONAL GOAL	Infrastructure condition, freight movement and economic vitality, environmental sustainability			Safety, congestion reduction, system reliability			Infrastructure condition, system reliability			Congestion reduction, freight movement and economic vitality, project delivery			
OBJECTIVE	Conform to air quality requirement	Maintain transportation infrastructure and facilities to minimize the need for replacement or rehabilitation	Investment in infrastructure	Reduce number of severe traffic crashes	Use the Congestion Management Process (CMP) to reduce congestion	Reliable travel times	Support transportation services for all including the most vulnerable and transit-dependent populations	Implement RTD, Regional Bicycle Plan, and North I-25 EIS	Develop infrastructure that supports alternate modes and connectivity	Use Transportation Demand Management techniques to reduce congestion and optimize the system	Implement Intelligent Transportation Systems (ITS)	Enhance transit service in the NFR	Reduce project delivery time frame
Each measure (and target) or policy is associated with one or more objectives indicated by the corresponding numbers													
PERFORMANCE MEASURE	Air quality conformity from air plans and programs		Number of facility closures with poor surface condition	Highways with a sufficiency rating below 50%	Five-year rolling average of injury and fatal crashes	Reasonably adjacent congested corridors with a travel time index of 2.2 times or less than free flow	Population and essential destinations within park-street and demand response service area within the MPO boundary	Non-motorized facilities per capita	Fixed-route revenue hours per capita within service area	Transit service vehicles within the parameters established by RTD	Change in VMT should not exceed change in population	Fixed-route capacity per capita within service area	
TARGET (over 4 years)	Passes Conformity		Reduce by 1%	Less than 5% of bridges	No increase in crashes	Maintain at least 80%	At least 85%	Increase by at least 2%	Increase by 30%	Maintain 75%	Change in VMT should not exceed change in population	Increase by 12%	
2040 RTP PLAN POLICY	Support freight performance in partnership with CDOT		Process TIP amendments on a quarterly schedule										

Value Statement
We seek to provide a multi-modal transportation system that is safe, as well as socially and environmentally sensitive for all users that protects and enhances the region's quality of life and economic vitality.

	Goal Area 1 Economic Development Quality of Life			Goal Area 2 Mobility			Goal Area 3 Multi-Modal			Goal Area 4 Operations				
MPO GOAL	Foster a transportation system that supports economic development and improves residents' quality of life			Provide a transportation system that moves people and goods safely, efficiently, and reliably			Provide a multi-modal system that improves accessibility and transportation system continuity			Optimize operations of transportation facilities				
NATIONAL GOALS	Infrastructure Condition			Safety			Infrastructure Condition			Congestion Reduction				
	Freight movement and economic vitality			Congestion Reduction			System Reliability			Freight Movement and Economic Vitality				
	Environmental Sustainability			System Reliability						Reduced Project Delivery Delays				
OBJECTIVES	Conform to air quality requirement	Maintain transportation infrastructure and facilities	Increase investment in infrastructure	Reduce number of severe traffic crashes	Reduce congestion	Improve travel time reliability	Support transportation services for all including the most vulnerable and transit-dependent populations	Increase mode share of non-single occupancy vehicles (SOV) modes	Develop infrastructure that supports alternate modes and connectivity	Optimize the transportation system	Enhance Transit Service in the NFR region	Reduce project delivery time frame		
PERFORMANCE MEASURES & TARGETS	5	2	3	T-1 T-2 T-3	6	1	4	4	6	6	6	4	6	6

RTP Organization



1. Introduction
 1. What is the MPO?
 2. What are the requirements?
 3. Vision and goals?
 4. Multimodal Transportation System

2. Trends
 1. Socioeconomic Data
 2. Initiatives and Technology
 3. System Performance
 4. Safety and Resiliency

15

Long Range Plan

RTP Organization



3. Visioning and Scenario Planning

4. Funding and Financing

5. Appendices

16

Long Range Plan

Contact



Alex Gordon

Transportation Planner III

agordon@nfrmpo.org

(970) 289-8279

AnnaRose Cunningham

Transportation Planner I

arcunningham@nfrmpo.org

(970) 818-9497