



MOBILITY & ACCESS PRIORITY GROUP

Thursday, April 7, 2022

1:30 pm - 3:00pm

Virtual Meeting

[Click here to join the meeting](#)

[+1 \(970\) 822-7967](#)

Access Code: 107 673 731#

AGENDA

1. Welcome and introductions
 - **Icebreaker:** You can have an unlimited supply of one thing for the rest of your life, what is it?
2. Review of Agenda and Meeting Notes (February)
3. RideNoCo (One Call/One Click Center) Updates
 - Regional Mobility Action Plan, Trip Discovery Tool, Trip Scheduling Steering Committee, and Outreach updates
4. Discussion Items:
 - [AARP Community Challenge Grant Updates](#) – Becker/Kilpatrick
 - **June Workshop: Walking/Accessibility Audit** – All
Discuss goals and location(s) for June Workshop Walk Audit
 - **Fall Workshop: Healthcare & Transportation Summit** – All
Begin planning for Healthcare & Transportation Summit
5. Member Updates
6. Next MAPG meeting – June 2, 2022
 - Next meeting topics:
7. Adjourn



RideNoCo Updates

Mobility & Access Priority Group



North Front Range
Metropolitan
Planning
Organization

April 7, 2022

Phase 1 2021

Website + Call Center

- Introduction of RideNoCo
- Central hub to identify transportation options across region and beyond

Phase 2 2022

Trip Discovery

- Ability to find and plan trips on public transit and human service providers in region
- Utilizing GTFS-Flex technology

Phase 3 2023

Trip Dispatching

- Find, plan, and book ride in one place across multiple providers
- Flexibility for transportation providers to schedule riders across different agencies

RideNoCo – Ahora en Español!



(970) 514-3636 [Select Language](#) ▼

[Home](#)

[¿Qué es RideNoCo?](#)

[Búsqueda de proveedores](#)

[DriveNoCo](#)

[Participe](#)

Conectándote con el norte de Colorado

RideNoCo es un centro de información sobre las opciones de transporte en la región del norte de Colorado y más allá.

Para obtener ayuda personalizada y encontrar las mejores opciones de movilidad según sus necesidades, comuníquese con un especialista en movilidad de lunes a viernes entre las 8:00 am y las 5:00 pm, llamando al (970) 514-3636 o escribiendo a mobility@nfrmpo.org.

Hay transporte de ida y vuelta gratuito, o a un precio módico, para la vacunación contra el COVID de personas de 18 años en el condado de Larimer, o para personas de 60 años en adelante y personas de 18 años con discapacidades en el condado de Weld. Para obtener más información o para programar programar su viaje comuníquese con un especialista en movilidad.

Encuentre la opción de movilidad adecuada para usted.



Guía Del Usuario

[CONECTÁNDOSE CON EL NORTE DE COLORADO](#)

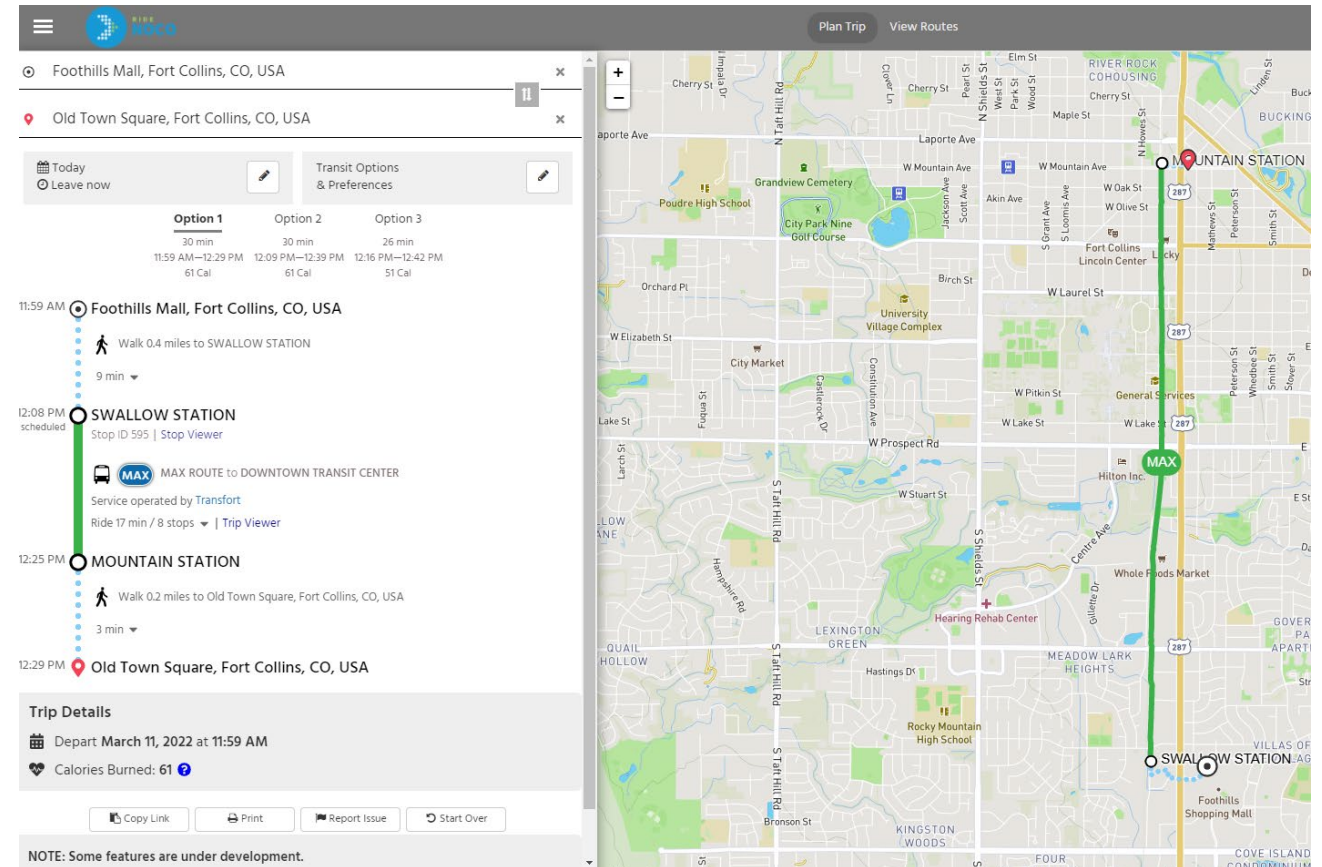
11.00 x 17.00 in

Phase 2: Trip Discovery Tool



- Target completion date of Summer 2022
- Providers in Planner:

Transfort	City of Loveland Transit (COLT)
Greeley-Evans Transit (GET)	Berthoud Area Transportation System (BATS)*
Bustang	Estes Transit
SAINT*	RAFT*
60+ Ride*	Via Mobility
RTD	SPIN e-scooters/e-bikes
Rocky Mountain National Park Shuttles	



*GTFS-Flex Databases created by Trillium as part of Trip Discovery project

Phase 3: Trip Scheduling Steering Committee



- **Purpose: Guide the implementation of the Trip Scheduling Software component of RideNoCo**
- Kicked off 3/31
- TransitPlus selected as Consultant to facilitate
 - Completed 2019 Larimer County Senior Transportation Implementation Plan
- Agencies represented:

60+ Ride of Weld County	SAINT Volunteer Transportation
Berthoud RAFT	Via Mobility Services
Greeley Evans Transit	Berthoud Area Transportation System (BATS)
Foothills Gateway	Arc of Weld County
Red Feather Lakes	CO Division of Vocational Rehab
Larimer County Office on Aging	Weld County AAA

Community Outreach Updates



- Community Outreach Plan
 - Includes outreach strategies for general awareness and driver recruitment
- Events/Presentations:
 - 2021: **16**
 - Q1 2022: **7**
- Rider's Guides Distributed
 - 2021: **1,219**
 - Q1 2022: **516**
 - Q2 2022 Estimate: **900+**
- Coordinating Outreach/Education
 - New Mobility Committee Working Group
 - Partner with RideNoCo!
 - Travel Trainings, boothing at Outreach Events, sharing materials, etc.



Cory Schmitt

Mobility Manager

cschmitt@nfrmpo.org

(970) 999-0072

Hanna Johnson

Mobility Coordinator

hjohnson@nfrmpo.org

(970) 672-0677

RideNoCo

8am-5pm, Monday-Friday

mobility@nfrmpo.org

(970) 514-3636

MOBILITY & ACCESS PRIORITY GROUP

FEBRUARY 3, 2022

1:30 P.M.

VIRTUAL MEETING

MEETING NOTES

ATTENDEES:	Cory Schmitt, NFRMPO	Sharon Courtney, Office on Aging Advisory Council	Anna Russo, Transfort
	Lorye McLeod, PAFC	Connie Nelson-Cleverley, SAINT	Suzanne King, Fort Collins Senior Advisory Board
	Josie Plaut, CSU Institute for the Built Environment	Ruth Fletcher-Carter, RAFT	Jim Becker
	Garrett Mumma, CO Division of Voc Rehab	Melina Dempsey, City of Fort Collins	Darlene Kilpatrick, Red Feather Lakes Library

MEETING NOTES	No comments.
ONE CALL/ONE CLICK CENTER UPDATES	Schmitt provided an update on RideNoCo including accomplishments in 2021 and what is on the horizon for 2022. Slides attached.
ACTION ITEM	Fletcher-Carter motioned to formally approve update to 5-year MAPG plan, Courtney seconded

Discussion Items

2022 IN-PERSON WORKSHOPS	Members discussed potential workshops for the group in 2022. MAPG members coalesced around doing some sort of walking audit for accessibility over the summer and convening a fall workshop focused on healthcare and transportation in the region.
AARP CHALLENGE GRANT/RED FEATHER LAKES TRANSPORTATION	<p>Kilpatrick and Becker described needs surrounding the start-up of transportation service between the Red Feather Lakes area and Fort Collins. Members discussed opportunities to support the efforts and some volunteered to form a working group to move the transportation service forward.</p> <p>Members agreed unanimously that an AARP Community Challenge grant application to provide site preparation & placemaking for the future bus stop in Red Feather Lakes along with a social event featuring a ribbon cutting for service and an education event for RideNoCo would be a strong proposal. Becker will be convening stakeholders and leading grant application with PAFC support.</p>
NORTH COLLEGE MAX ENGAGEMENT PHASE 2	<p>Plaut presented on Phase 2 of Community Engagement for the North College MAX Project following the feedback received from community members in Phase 1. Learn more about the project and take a survey here:</p> <p>https://www.fcgov.com/northcollegemax/</p>

Member Updates

NONE	None this month due to time constraints
------	---

Next Meeting: Thursday, October 7, 2021 - 1:30 to 3:00 p.m.

TBD

NEXT MEETING TOPICS	None requested.
ADJOURN	Meeting adjourned at 3:06 p.m.

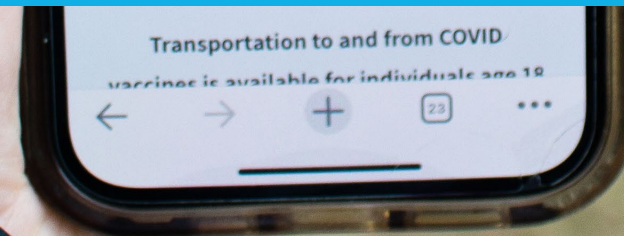


RideNoCo Updates: Looking Ahead into 2022

Mobility & Access Priority Group



North Front Range
Metropolitan
Planning
Organization



February 3, 2022

Connecting You & Northern Colorado

Connecting You & Northern Colorado
embodies the two overarching goals of the
program:

1. Improving **individual mobility**, particularly for groups such as older adults, individuals with disabilities, lower income individuals, and people who do not speak English as a first language.
2. Improving **regional mobility** through enhanced coordination and collaboration among regional public and private transportation providers, especially in rural areas of Larimer & Weld counties.



Connecting You & Northern Colorado

RideNoCo is a system that:

The vision of RideNoCo is to **develop a coordinated system that schedules rides across multiple providers with seamless and accessible options for users.**

1 2 3

Is **simple** for anyone to easily find information about available transportation options



Has **robust financial capabilities** related to trip costs, trip payment, invoicing, and eligibility



Provides and shares accurate information to allow for **data-driven decisions**



Empowers and enables providers to share trips to make the best use of vehicles and provide more rides

A Phased Approach

Phase 1

2021

Website + Call Center

- Introduction of RideNoCo
- Central hub to identify transportation options across region and beyond

Phase 2

2022

Trip Discovery

- Ability to find and plan trips on public transit and human service providers in region
- Utilizing GTFS-Flex technology

Phase 3

2023

Trip Dispatching

- Find, plan, and book ride in one place across multiple providers
- Flexibility for transportation providers to schedule riders across different agencies

Ongoing-Data Collection: Where are mobility needs being met and where do gaps remain?

Phase 1: Website + Call Center

Phase 1 2021

Status: Complete

In 2021:

- 772 website visits
- 94 calls



Phase 2: Trip Discovery

- **Find and plan trips on RideNoCo website**
 - With public and human service transportation providers + walking/biking
- **Utilizing GTFS-Flex Technology**
 - Allows demand-response and volunteer driver services to be incorporated
 - Complements CDOT's Connected Colorado project
- **Vendor selected**
 - IBI Group with support from Trillium

Phase 2
2022

Status: In Progress

Phase 3: Trip Dispatching

Phase 3 2023

Status: In Progress

- **Empower providers and riders**
 - Find, book, and pay for ride in one place
- **Trip Scheduling Steering Committee**
 - Arrive at a system that meets the wants and needs of providers
 - Consultant being brought on board to facilitate process
 - Meetings to begin February 2022
- **Goal:** Scheduling platform debuting late 2022/early 2023

Trip Scheduling Steering Committee

Vision

A coordinated scheduling system that schedules rides across multiple providers with seamless and accessible options for users



Listen



Formulate



Evaluate



Guide

Steering Committee Members



60+ Ride of Weld County	SAINT Volunteer Transportation
Berthoud RAFT	Via Mobility Services
Greeley Evans Transit	Berthoud Area Transportation System (BATS)
Foothills Gateway	Arc of Weld County
Red Feather Lakes	CO Division of Vocational Rehab
Larimer County Office on Aging	Weld County AAA

Here's to 2022!



Cory Schmitt

Mobility Manager

cschmitt@nfrmpo.org

(970) 999-0072

RideNoCo

8am-5pm, M-F

mobility@nfrmpo.org

(970) 514-3636

Mobility & Access

Overarching goal:

To increase awareness of and promote transportation options, service delivery mechanisms, community planning and other creative means for older adults and adults with disabilities in Larimer County to access key services and quality of life opportunities. Creating a safe, reliable, multimodal, and inclusive transportation system for older adults and people with disabilities in Larimer County.

PAFC Strategic Framework

- Connect
- Explore
- Empower/Inform
- Sustain

Leading to: Change and Achievement for older adults in Larimer County.

Existing assets and programs:

- Collaboration and cooperation with current providers: Berthoud Area Transportation Systems (BATS), Rural Alternative for Transportation (RAFT), Via Mobility, Heart & Soul Paratransit, Senior Alternatives in Transportation (SAINT), Wellington Senior Center, Transfort/Dial-a-Ride, City of Loveland Transit (COLT), Town of Estes Park, zTrip
- Larimer County Department of Health & Environment Built Environment Program
- North Front Range MPO (NFRMPO) – Larimer County Mobility Committee
- Pro 31 Safe Senior Driver

Opportunities

Partner with the NFRMPO Larimer County Mobility Committee, Larimer County Health Department Built Environment team, current transportation providers, and Larimer County government to work on expansion and improvement of our transportation systems. The focus will be on outreach, education, and promotion of existing services to better connect both incorporated and unincorporated areas of Larimer County.

Summary of Completed Projects

1. Acted as the Steering Committee for the Larimer County Senior Transportation Needs Assessment
2. Developed and hosted Regional Bustang Travel Trainings, including a marketing opportunity supported through an AARP Livable Communities grant
3. Supported PAFC and NFRMPO with two National Aging & Disability Transportation Center grants (NADTC), including participation in local, regional, state, and national conferences and speaking opportunities
4. Distributed transportation provider materials at local events and senior centers
5. Provided support and input for the future One Call/One Click Center in Northern Colorado, RideNoCo

Goal 1: EXPERIENCE

To promote and expand travel training programs for older adults and adults with disabilities throughout Larimer County.

Action Steps

- Coordinate with appropriate liaisons from Fort Collins, Loveland, and Berthoud to plan travel training and increase frequency of the training by promoting training the trainer programs and distributing easily duplicated training resources.
- Evaluate capacity of travel training programs including staff availability, resources available, and programmatic needs. Support resources that expand the capacity for travel training programs.
- Create and maintain a schedule of travel training throughout Larimer County.
- Develop Spanish travel training materials.
- Work with community partners to increase interregional travel training, including trips to Longmont, Boulder, and Denver.
- Develop a travel training program appropriate for a COVID and post-pandemic transportation environment.

Partners

- City of Fort Collins/Transfort/Dial-A-Ride
- City of Loveland/City of Loveland Transit (COLT)
- Rural Alternative for Transportation (RAFT)
- Berthoud Area Transportation System (BATS)
- Colorado Department of Transportation/CDOT
- NFRMPO/Larimer County Mobility Committee
- Regional Transportation District (RTD)
- Town of Estes Park
- Senior Alternatives in Transportation (SAINT)
- Via Mobility
- Wellington Senior Center
- zTrip
- Pro-31 Safe Driving
- La Familia/The Family Center
- Heart&SOUL Paratransit
- North 40 Mountain Alliance
- UC Health
- Banner Health
- Salud Family Health
- Health District of Larimer County

Performance Indicators

- How many travel training sessions were performed?
- How many cities hold travel training?
- How many attended each travel training?

Goal 2: INFORM

To develop a community outreach and education program about transportation resources, driver safety and travel training as recommended in the Larimer County Senior Transportation Needs Assessment. These outreach and education efforts will emphasize communicating the affordability of these services and relieving anxiety for older adults using transportation services.

Action Steps

1. Collect resources to promote existing services
2. Distribute the resources to local agencies, organizations, advocates, and residents
3. Collaborate on new programming to grow awareness around transportation options and services
4. Communicate the affordability and safety of public transportation as well as changes made to service to keep older adults up to date
5. Ensure educational materials are accessible to a variety of audiences

Partners

- City of Fort Collins/Transfort/Dial-A-Ride
- City of Loveland/City of Loveland Transit (COLT)
- Rural Alternative for Transportation (RAFT)
- Berthoud Area Transportation System (BATS)
- Colorado Department of Transportation/CDOT
- NFRMPO/Larimer County Mobility Committee
- Regional Transportation District (RTD)
- Town of Estes Park
- Senior Alternatives in Transportation (SAINT)
- Via Mobility
- Wellington Senior Center
- zTrip
- Heart&SOUL Paratransit
- La Familia/The Family Center
- North 40 Mountain Alliance
- UC Health
- Banner Health
- Salud Family Health
- Health District of Larimer County

Performance Indicators

- How many events were held?
- How many resources were distributed?
- How many new people learned about existing transportation services?

Goal 3: SUPPORT

To support and spread awareness of RideNoCo, the One Call/One Click Center in Larimer and Weld counties.

Action Steps

1. Plan and support outreach opportunities for RideNoCo
2. Collect feedback by engaging stakeholders
3. Develop PAFC role in RideNoCo
4. Provide feedback on RideNoCo programming
5. Advocate for marketing materials that are accessible to as many people as possible by utilizing accessible fonts, language, etc.

Performance Indicators

- What percentage older adults and adults with disabilities are aware of the program when surveyed?
- How many first-time riders used RideNoCo?
- How many providers are involved in RideNoCo?
- How many hours of outreach have PAFC/MAPG members used to promote RideNoCo?
- How many MAPG members regularly supported RideNoCo programs through participation, feedback, or outreach?

Partners

- City of Fort Collins/Transfort/Dial-A-Ride
- City of Loveland/City of Loveland Transit (COLT)
- Rural Alternative for Transportation (RAFT)
- Berthoud Area Transportation System (BATS)
- Colorado Department of Transportation/CDOT
- NFRMPO/Larimer County Mobility Committee
- Regional Transportation District (RTD)
- Town of Estes Park
- Senior Alternatives in Transportation (SAINT)
- Via Mobility
- Wellington Senior Center
- zTrip
- Heart&SOUL Paratransit
- La Familia/The Family Center
- North 40 Mountain Alliance
- UC Health
- Banner Health
- Salud Family Health
- Health District of Larimer County

Goal 4: SAFETY

To encourage, advocate for, and support a transportation network in Larimer County that older adults feel physically and emotionally safe using.

Action Steps

1. Increase awareness of safe driving programs for older adults
2. Support efforts to make all modes of transportation safe for older adults
3. Assess gaps in safety and feelings of safety across all modes of transportation for older adults
4. Communicate findings of the gaps assessment to stakeholders and transportation providers
5. Support programs that increase older adult's safety and feelings of safety while using all modes of transportation
6. Provide letters of support for projects and programs that support this goal

Performance Indicators

- How many older adults reported an increase of feelings of safety on various modes of transportation?
- How many older adults provided feedback to the gaps assessment?
- How many projects that MAPG advocated for received funding to increase safety for bicyclists, pedestrians, people using transit, etc.?
- Number of crashes involving older adults before implementation and after
- Number of older adults participating in safe driving programs

Partners

- Pro 31 Safe Senior Driver
- CNS Adaptive Driving Solutions
- Covell Care & Rehabilitation – Driving Rehabilitation
- City of Fort Collins/Transfort/Dial-A-Ride
- City of Loveland/City of Loveland Transit (COLT)
- Rural Alternative for Transportation (RAFT)
- Berthoud Area Transportation System (BATS)
- Colorado Department of Transportation/CDOT
- NFRMPO/Larimer County Mobility Committee
- Regional Transportation District (RTD)
- Town of Estes Park
- Senior Alternatives in Transportation (SAINT)
- Via Mobility
- Wellington Senior Center
- zTrip
- Heart&SOUL Paratransit
- North 40 Mountain Alliance
- La Familia/The Family Center
- UC Health
- Banner Health
- Salud Family Health
- Health District of Larimer County
- Colorado State University Institute for the Built Environment

Goal 5: EXPLORE

Explore mobility and access needs and opportunities for older adults in Larimer County beyond the One Call/One Click Center and “traditional” human service transportation with modes such as biking and walking. Explore transportation service expansions, cultivate greater geographic, cultural, socioeconomic, and ethnic diversity and inclusion.

Action Steps

1. Facilitate discussions and opportunities for feedback in the community to assess opportunities to increase access for older adults to all modes of transportation in Larimer County
2. Invite experts in related fields to speak at MAPG meetings to increase awareness and understanding of intersectional solutions to mobility and access for older adults and people with disabilities
3. Encourage MAPG members to attend educational opportunities related to intersectional perspectives of mobility and transportation access
4. Identify additional stakeholders and develop relationships with their organizations
5. Assess the need for additional resources to improve mobility of older adults in Larimer County
6. Identify strategies and partners to advance equity and inclusion within Mobility & Access Priority Group activities and among transportation services in Larimer County through training, outreach, and assessments.

Performance Indicators

- How many speakers or educational seminars related to transportation did MAPG members attend?
- Number of survey or interview responses
- Number of new stakeholders collaborated with
- Number of presentations given to MAPG members by external organizations
- Number of diversity and inclusion trainings
- Number of outreach efforts related to diversity and inclusion goal

Partners

- City of Fort Collins/Transfort/Dial-A-Ride
- City of Loveland/City of Loveland Transit (COLT)
- Rural Alternative for Transportation (RAFT)
- Berthoud Area Transportation System (BATS)
- Colorado Department of Transportation/CDOT
- NFRMPO/Larimer County Mobility Committee
- Regional Transportation District (RTD)
- Town of Estes Park
- Senior Alternatives in Transportation (SAINT)
- Via Mobility
- Wellington Senior Center
- zTrip
- Heart&SOUL Paratransit
- La Familia/The Family Center
- CSU Institute for the Built Environment
- Larimer County Public Health and Environment
- SPIN
- North 40 Mountain Alliance
- CSU Institute for the Built Environment

North College MAX Plan

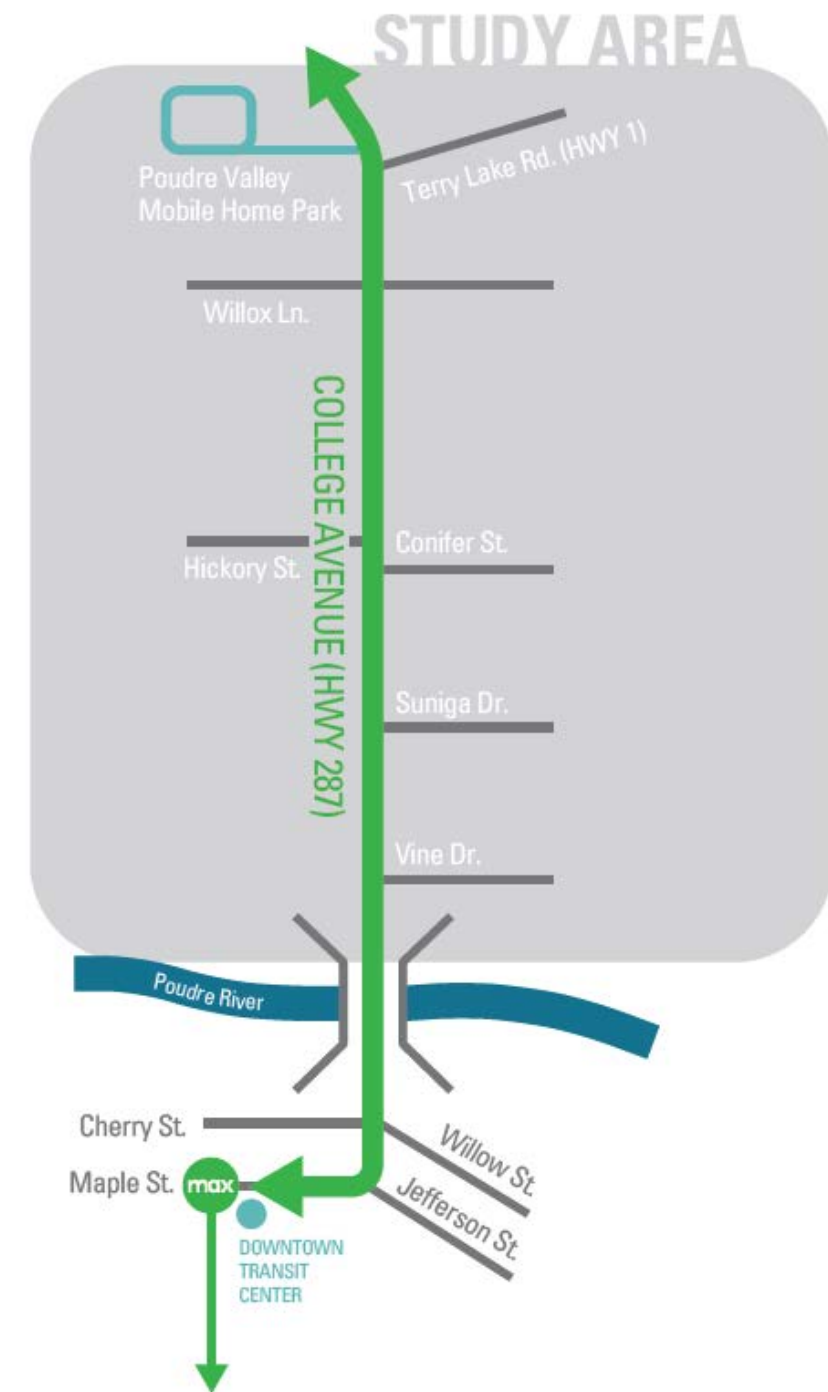
Phase 2 Community Engagement
January & February 2022

Agenda

- Phase 1 Community Engagement
 - Past engagement activities
 - What we heard
- Phase 2 Engagement
 - Destinations
 - Density & transportation
 - Overall priorities
- Next Steps

Project Objective

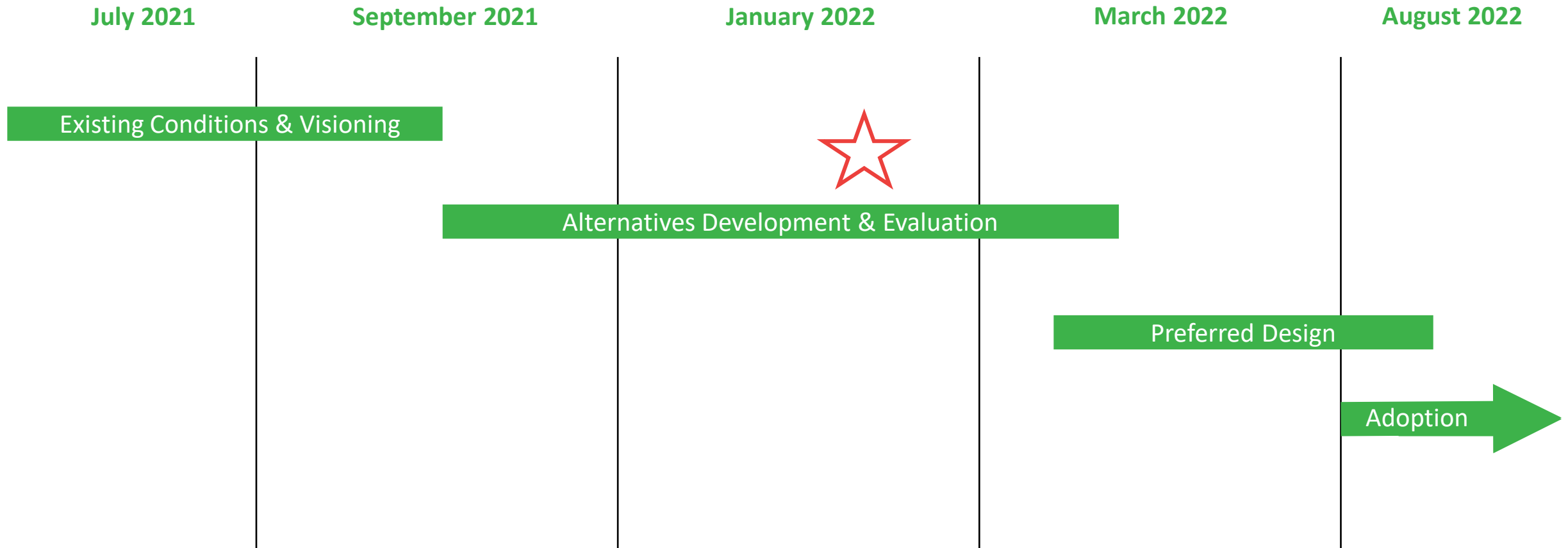
This project is to create **a plan** to bring MAX to North College Avenue from Downtown to Highway 1/Terry Lake Rd.



Overall Timeline



Project Schedule



Public Involvement by Phase

Phase 1

Existing Conditions & Visioning (complete)

- Identify and establish relationships with community members and organizations
- Conduct focus groups, workshops, participatory mapping and online polling

Phase 2

Options & Evaluation – Jan/Feb 2022

- Share Phase 1 learnings and gather additional community input on key issues and design options.

Phase 3

Preferred Design – March 2022

- Gather community input on a preferred design for the N. College MAX.

Phase 1 Community Engagement Summary

Community Engagement Summary

Direct Engagement ¹

311
Community Members

114
Mapping
Comments

124
Online Surveys
(English & Spanish)

723
Unique
Webpage Views

75
Video Views

52
Organizations &
Businesses

4,957
Social Post Reach
517
Social Engagements

In-Depth Involvement ²

74
Community Members

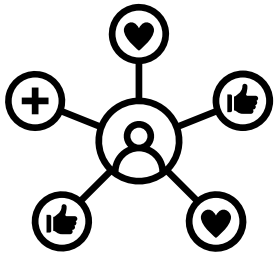
6
Focus Groups
(English & Spanish)

2
Public
Workshops
(English & Spanish)

¹ short presentations & conversations

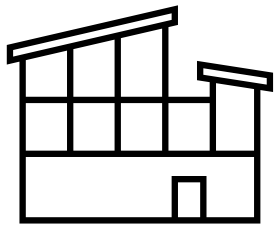
² 45-90-minute focus groups & workshops

KEY THEMES



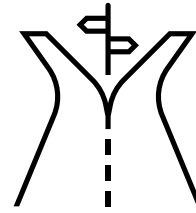
Community Benefits

Overall support for extending MAX to North Fort Collins, bringing increased mobility to youth, seniors, and greater connectivity to businesses and services in the area.



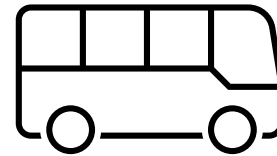
Gentrification & Land Use

Concerns about gentrification and high-end densification, desire to preserve affordability for residents and businesses alike, equity as a guiding principle



Infrastructure Considerations

Include parking for those coming from the North, address east to west connectivity in the area including crossing College, eliminate Mason Street extension option; minimize impact to existing businesses.



Routes, Stops & Frequency

Desire for continuous service from Terry Lake Rd. to S. Transit Station, connect to key destinations across the city, maintain service along Spruce and Redwood (8 & 81).



Rider Experience

Improve ease navigating the transit system, sheltered stops, assure a welcoming and safe environment for all, managing challenging rider behaviors.

Phase 2: Community Engagement

Current Questions

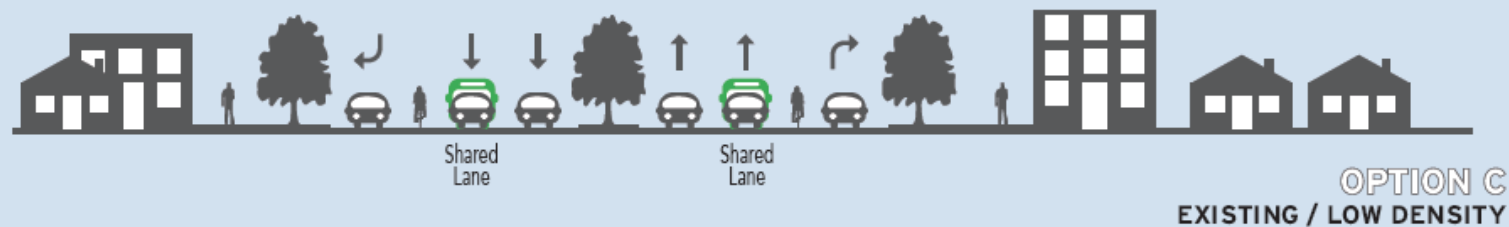
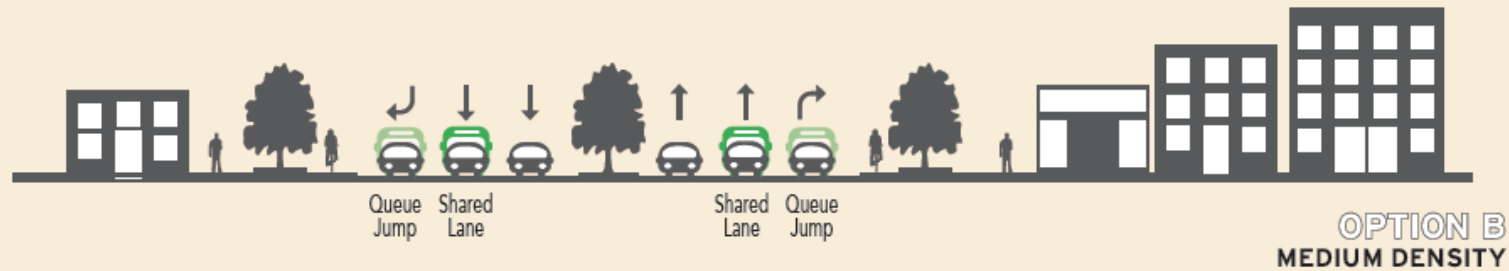
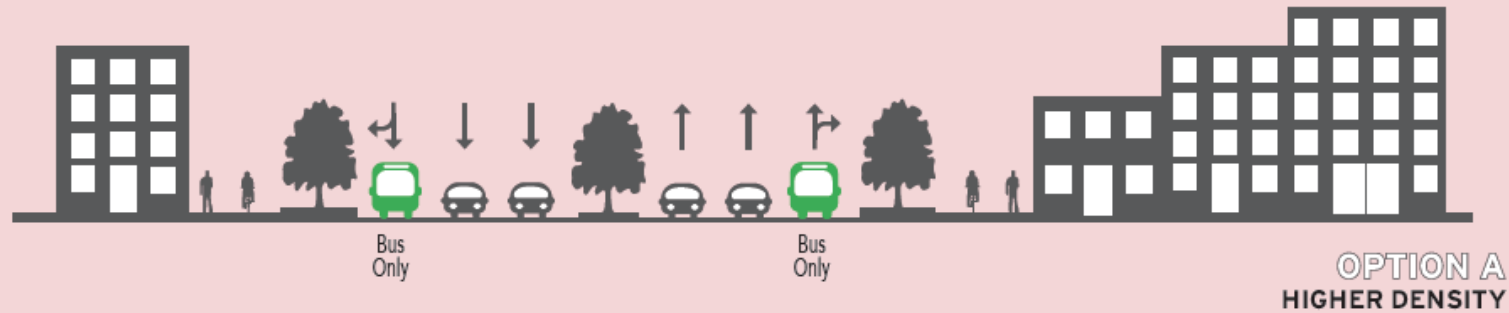
Housing, Jobs & Transit

Improvements in public transit such as more buses per hour, better bus stops and dedicated bus lanes and increased density in housing and jobs go hand in hand. Knowing there is a relationship between these factors, which of the following options would you like to see for the future of the North College corridor?



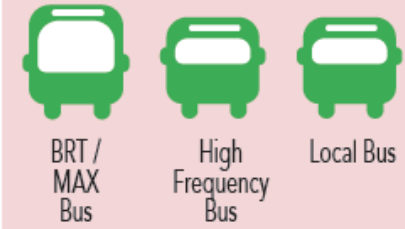
STREETS

DENSITY AND SERVICES CORRELATION

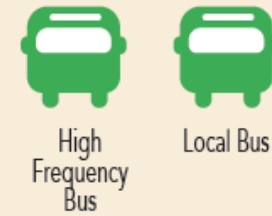


TRANSIT

APPROPRIATE TYPES OF TRANSIT



FREQUENCY OF SERVICE



2022 Mobility Calendar

-  LCMC
-  WCMC
-  MAPG
-  Joint Mobility

January

Sun	Mon	Tue	Wed	Thu	Fri	Sat
						1
2	3	4	5	6	7	8
9	10	11	12	13	14	15
16	17	18	19	20	21	22
23	24	25	26	27	28	29
30	31					

February

Sun	Mon	Tue	Wed	Thu	Fri	Sat
		1	2	3	4	5
6	7	8	9	10	11	12
13	14	15	16	17	18	19
20	21	22	23	24	25	26
27	28					

March

Sun	Mon	Tue	Wed	Thu	Fri	Sat
		1	2	3	4	5
6	7	8	9	10	11	12
13	14	15	16	17	18	19
20	21	22	23	24	25	26
27	28	29	30	31		

April

Sun	Mon	Tue	Wed	Thu	Fri	Sat
					1	2
3	4	5	6	7	8	9
10	11	12	13	14	15	16
17	18	19	20	21	22	23
24	25	26	27	28	29	30

May

Sun	Mon	Tue	Wed	Thu	Fri	Sat
1	2	3	4	5	6	7
8	9	10	11	12	13	14
15	16	17	18	19	20	21
22	23	24	25	26	27	28
29	30	31				

June

Sun	Mon	Tue	Wed	Thu	Fri	Sat
			1	2	3	4
5	6	7	8	9	10	11
12	13	14	15	16	17	18
19	20	21	22	23	24	25
26	27	28	29	30		

July

Sun	Mon	Tue	Wed	Thu	Fri	Sat
					1	2
3	4	5	6	7	8	9
10	11	12	13	14	15	16
17	18	19	20	21	22	23
24	25	26	27	28	29	30
31						

August

Sun	Mon	Tue	Wed	Thu	Fri	Sat
	1	2	3	4	5	6
7	8	9	10	11	12	13
14	15	16	17	18	19	20
21	22	23	24	25	26	27
28	29	30	31			

September

Sun	Mon	Tue	Wed	Thu	Fri	Sat
				1	2	3
4	5	6	7	8	9	10
11	12	13	14	15	16	17
18	19	20	21	22	23	24
25	26	27	28	29	30	

October

Sun	Mon	Tue	Wed	Thu	Fri	Sat
						1
2	3	4	5	6	7	8
9	10	11	12	13	14	15
16	17	18	19	20	21	22
23	24	25	26	27	28	29
30	31					

November

Sun	Mon	Tue	Wed	Thu	Fri	Sat
		1	2	3	4	5
6	7	8	9	10	11	12
13	14	15	16	17	18	19
20	21	22	23	24	25	26
27	28	29	30			

December

Sun	Mon	Tue	Wed	Thu	Fri	Sat
				1	2	3
4	5	6	7	8	9	10
11	12	13	14	15	16	17
18	19	20	21	22	23	24
25	26	27	28	29	30	31

2022 Meeting Dates:

- 1/20: LCMC
- 2/3: MAPG
- 2/22: WCMC
- 3/17: Joint
- 4/7: MAPG
- 4/26: WCMC
- 5/19: LCMC
- 6/2: MAPG
- 6/28: WCMC
- 7/21: LCMC
- 8/4: MAPG
- 8/30: WCMC
- 9/15: LCMC
- 10/6: MAPG
- 10/25: Joint
- 11/17: LCMC
- 12/1: MAPG
- 12/13: WCMC