



Weld County Mobility Committee (WCMC)—AGENDA

June 28, 2022

1:30 – 3:00 p.m.

Virtual

Call-in information:

(970) 822-7967

Code: 838-673-630#

Meeting Link: [Click here to join the meeting](#)

-
1. Call Meeting to Order, Welcome, Introductions
 2. Review of Agenda
 3. Public Comment (*2 minutes each*)
 4. Approval of April 26, 2022 Meeting Minutes
-

PRESENTATION & DISCUSSION

1) United Way Aging Well Collective Impact

Garrison

Overview of Weld County's AARP Aging Well Transportation Domain

RIDENOCO UPDATE

Update on Trip Discovery and Trip Scheduling projects, and introducing AmeriCorps member

ACTION ITEM

2) August Meeting Date

All

Current date of 8/30 is 5th Tuesday of month and not 4th

DISCUSSION ITEMS

3) Shared Resource Library

Johnson

Walk through of Shared Resource Library

WORK GROUPS

- 4) Outreach and Education
- 5) Recruitment
- 6) Report Out

GREELEY-EVANS TRANSIT NEWS AND UPDATES

WCMC MEMBER REPORTS

5. Final Public Comment (*2 minutes each*)
6. Next Month's Agenda Topic Suggestions
7. Next Meeting: August 23rd or August 30th, 2022– 1:30-3 pm



Weld County Mobility Committee (WCMC)—MINUTES

April 26, 2022

1:33 p.m. – 3:00 p.m.

1. Call Meeting to Order, Welcome and Introductions

- Steve Teets, WAND
- Abdul Barzak, Town of Severance
- Celeste Ewert, Envision
- Robyn Upton, Greeley Citizens Bus Improvement Committee
- Chris Montoya, Adeo
- Margie Martinez, Weld County United Way
- Leiton Powell, GET
- Nichole Seward, Weld County AAA
- Garrett Mumma, CO Div of Vocational Rehab
- Adriana Torres, Via Mobility Services
- Lisa Bitzer, Via Mobility Services

NFRMPO staff: Cory Schmitt, Hanna Johnson

2. Review of Agenda

3. Public Comment (2 minutes each)

4. Approval of February 2022 Meeting Minutes

Teets motioned to approve the February minutes. Barzak seconded the motion, and it was approved unanimously.

WORKING GROUPS

1) Recruitment Working Group – Schmitt, Ewert, Barzak, Martinez, Teets

- a. **Mission Statement established:** The Recruitment Working Group will coordinate strategies and activities to increase active membership in mobility committees.
- b. **Initial Steps:**
 - i. Make a spreadsheet of current LCMC/WCMC active and inactive members from distribution lists
 - ii. Focus on re-engaging existing members before turning attention to new members

2) Outreach and Education Working Group – Johnson, Seward, Powell, Bitzer, Mumma, Torres, Montoya

- a. **Mission Statement established:** The Outreach and Education Working Group will coordinate strategies and activities to increase awareness of transportation providers and programs in Larimer and Weld counties.
- b. **Initial Steps:**
 - i. Create a shared outreach and engagement calendar
 - ii. Share RideNoCo Media Package with partners

3) Report out – All



Both groups shared their next steps.

RIDENOCO UPDATES

Schmitt gave an update about RideNoCo, including the following updates:

- 1) Trip Discovery Tool will be completed Summer 2022
- 2) The Trip Scheduling Steering Committee met for the first time March 31st. TransitPlus is facilitating the steering committee.
- 3) Northern Colorado Provider Inventory Survey:
 - a. Dual purpose:
 - i. Gain a better understanding of infrastructure and capacity in region across all transportation providers to aid in coordination of services and resources
 - ii. Share information with respective county offices of Emergency Management
 - b. Schmitt reviewed potential survey questions.
 - i. Martinez: Need to know capacity of each vehicle. Ask if providers would be available on-call in case of an emergency. Bounce survey questions off both Weld and Larimer Offices of Emergency Management to ensure it captures their informational needs. Under contract, request who a 24-hour contact person should be in the case of an emergency rather than general agency contact. Ask for addresses of vehicle lots rather than administrative address to be more useful in case of an emergency.
 - ii. Teets: Request information about special service populations like veterans, people with disabilities, etc. He suggested bouncing the survey off MPO officials.
 - iii. Bitzer: let them know who the primary contact should be in the case of an emergency response.
 - iv. Mumma: Ask providers where people can access information about services: website, phone, mobile application, brochures, etc. Make the “special services” question nuanced to include the variety of qualifications.
 - c. Schmitt asked if it would be onerous for transportation providers to fill this out.
 - i. Powell: GET is willing to fill this out. They already have a lot of this information on hand. If the questions can be condensed as much as possible, that would be helpful.

ACTION ITEM

1) 2022 Regional Mobility Action Plan –

Teets requested to learn more about Boulder County’s Coordinated Plan. Schmitt noted that the group could invite Angel Bond with Boulder County to present updates on the plan now that it is complete.

Ewert pointed out the need to change “Goal 9” to “Goal 7” on page 13. Ewert made a motion to adopt the plan with that change. Teets seconded the motion.



DISCUSSION ITEMS

1) Rural Southwestern Weld County Project – Bitzer

Bitzer shared updates regarding the Via Mobility pilot project in southwestern Weld County. The final data from the pilot are attached to the minutes. Via Mobility is working with Weld County to establish a funding stream to continue the service; currently a state MMOF funding source seems promising. Via can contribute approximately \$100,000 of its allocation of \$5311 funds towards the project, but with Hudson and Keenesburg wanting to join the project, 2 vehicles will be needed. The service costs approximately \$65-\$74 for a trip each way. Teets asked how Via's service in Broomfield is going, and Bitzer noted that their only service in Broomfield is to cover trips from [Easy Ride](#) into Boulder County when Easy Ride is unable to provide the service.

PRESENTATION

2) Envision, Creative Support for People with Developmental Disabilities – Ewert

Ewert with Envision shared details regarding their organization and services, including their transportation services for their clients. Envision is the Community Centered Board serving Weld County – they provide a single-entry point case management service for people with intellectual or developmental disabilities. Additionally, they provide direct services to their clients, including transportation. A federal ruling called “Conflict Free Case Management” will change the structure of Envision; their board will have to decide whether Envision will provide either case management services or direct services – they cannot provide both. Slides from this presentation are attached.

GREELEY EVANS TRANSIT NEWS AND UPDATES

Powell shared that GET is in the process of many changes that he will be sharing more in-depth soon. Starting May 12th Routes 5 and 6 will return to pre-pandemic service levels of 20-minute headways. GET is currently down 4 positions, but they were originally down 14 positions 9 months ago, so they are seeing improvement overall. They will be at the Greeley Stampede Parade and the Winsor Harvest Festival to promote their services. A ridership survey will go out soon.

WCMC MEMBER UPDATES

Teets shared that the Weld Advocacy Network on Disabilities (WAND) is continuing to work on addressing issues related to housing and homelessness, as well as surveying the Greeley community regarding a connection to the [UC Health Hospital](#) and [St. Michael's Square](#). He shared that the City of Greeley is having a meeting regarding housing and homelessness on May 18th at 6pm at the Greeley Downtown Recreation Center.

Final Public Comment (2 minutes each)

Next Month's Agenda Topic Suggestions

Teets requested a presentation and discussion item regarding IntelliRide.

Upcoming Meetings:

- a. WCMC Meeting:** June 28th, 2022 at 1:30 PM – format TBD



1

Introducing Sheereen- Our AmeriCorps VISTA!

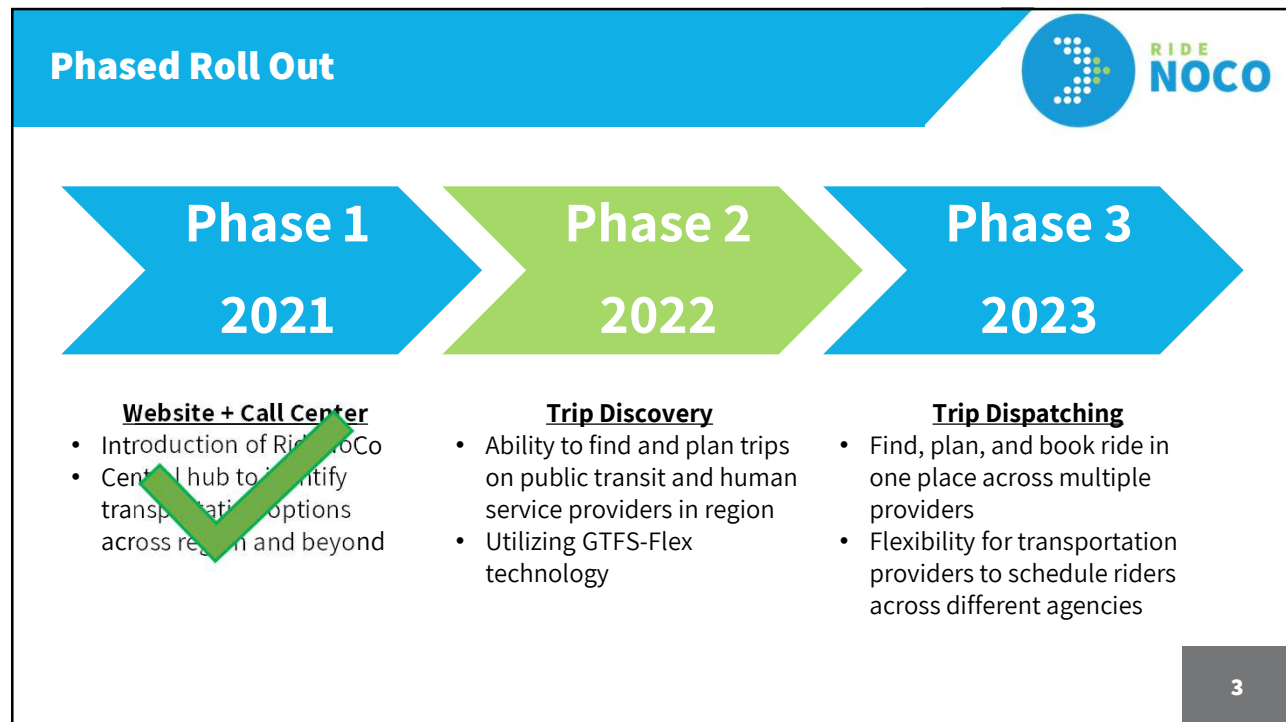


- AmeriCorps VISTA Outreach Specialist**
 - Adding capacity for outreach activities
- Experience:
 - Masters in Planning
 - VISTA serving for a similar mobility program in Texas
 - Familiar with mobility and multimodal transportation topics
- Serving June 2022 – June 2023**



2

2



3

RideNoCo – Ahora en Español!





[Home](#)
[¿Qué es RideNoCo?](#)
[Búsqueda de proveedores](#)
[DriveNoCo](#)
[Participe](#)

(970) 514-3636 [Select Language](#)

Conectándose con el norte de Colorado

RideNoCo es un centro de información sobre las opciones de transporte en la región del norte de Colorado y más allá.

Para obtener ayuda personalizada y encontrar las mejores opciones de movilidad según sus necesidades, comuníquese con un especialista en movilidad de lunes a viernes entre las 8:00 am y las 5:00 pm, llamando al (970) 514-3636 o escribiendo a mobility@nrmco.org.

Hay transporte de ida y vuelta gratuito, o a un precio módico, para la vacunación contra el COVID de personas de 18 años en el condado de Larimer, o para personas de 60 años en adelante y personas de 18 años con discapacidades en el condado de Weld. Para obtener más información o para programar programar su viaje comuníquese con un especialista en movilidad.

Encuentre la opción de movilidad adecuada para usted.


Transporte público


Personas mayores


Acceso para sillas de...


Comercial



Guía Del Usuario

CONECTÁNDOSE CON EL NORTE DE COLORADO

4

4

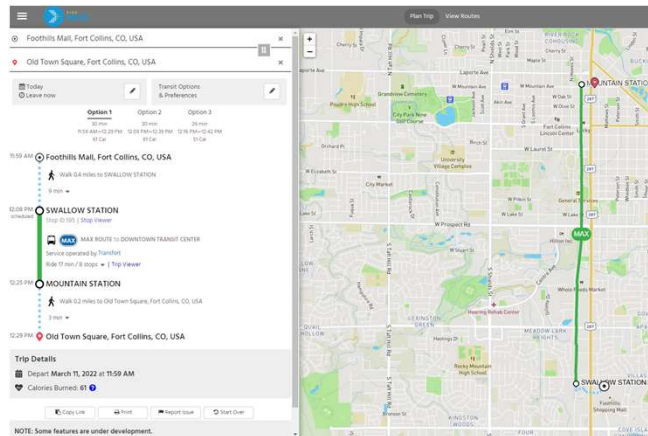
4

Phase 2: Trip Discovery Tool



- **Target completion date of Summer 2022**
- **Providers in Planner:**

Transfort	City of Loveland Transit (COLT)
Greeley-Evans Transit (GET)	Berthoud Area Transportation System (BATS)*
Bustang	Estes Transit
SAINT*	RAFT*
60+ Ride*	Via Mobility
RTD	SPIN e-scooters/e-bikes
Rocky Mountain National Park Shuttles	



*GTFS-Flex Databases created by Trillium as part of Trip Discovery project

5

5

Phase 3: Trip Scheduling Steering Committee

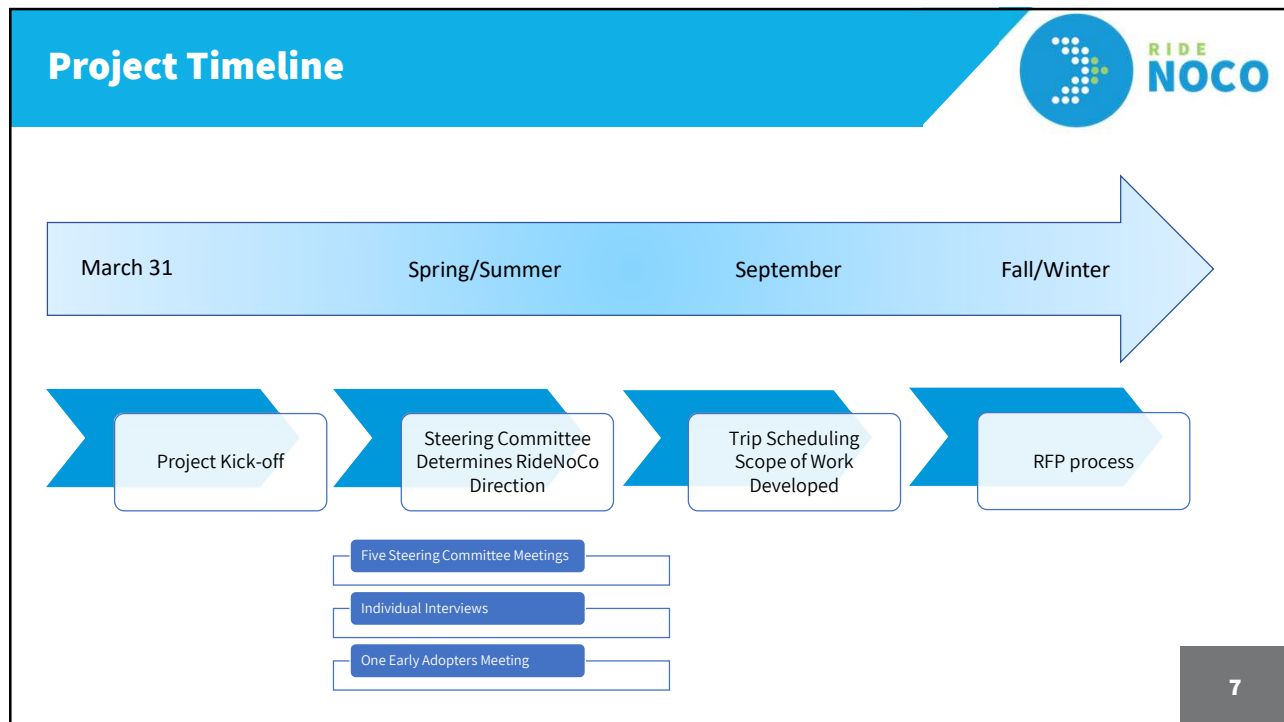


- **Purpose: Guide the implementation of the Trip Scheduling Software component of RideNoCo by determining agency and regional technology needs, capacity, and software functionality**
- TransitPlus selected as Consultant to facilitate
 - Completed 2019 Larimer County Senior Transportation Implementation Plan
- Agencies represented:

60+ Ride of Weld County	SAINT Volunteer Transportation
Berthoud RAFT	Via Mobility Services
Greeley Evans Transit	Berthoud Area Transportation System (BATS)
Foothills Gateway	Arc of Weld County
Red Feather Lakes	CO Division of Vocational Rehab
Larimer County Office on Aging	Weld County AAA

6

6



7

Phase 3: Initial Themes

The slide features the RideNoCo logo in the top right corner. The main content consists of three bullet points, each with a bolded header and a list of specific findings or questions.

- **A majority of the providers are:**
 - Happy with what they currently have (60+ Ride)
 - Or are getting something tailored to their agency (Via)
- **The focus of trip scheduling software needs to be on meeting the needs of RideNoCo, North 40 Mountain Alliance, and RAFT.**
 - Determining the functionality needed by these two agencies and RideNoCo is the next step
- **What is the role of RideNoCo in the short vs. long term?**
 - Conducting intake & eligibility and providing warm transfers at Call Center on behalf of providers could be a consensus first step

8

8

Northern Colorado Provider Inventory Survey



- Discussed at previous Joint Mobility meetings
- Dual purpose:
 - Gain a better understanding of infrastructure and capacity in region across all transportation providers to aid in coordination of services and resources
 - Resource to be used by Larimer County and Weld County Offices of Emergency Management



9

9

Shared Resource Library



- Discussed at previous Joint Mobility meetings
- Google Drive Platform
 - DEMO structure
- Determine Nomenclature for Documents
 - DocName_Agency_Year
 - RidersGuideEnglish_NFRMPO_2022
 - LCMC liked this format
- Use agreement – thoughts/feedback?
 - LCMC members wanted a “terms of use” agreement
 - What can be shared externally/what should only be used internally?



10

10

Work Group Breakout Activity



Recruitment

- Coordinate strategies and activities to increase active membership and participation in mobility committees.

• **Today's outcomes:**

- Review Proposed Mission
- Review ideas from LCMC
- Review Inactive WCMC Roster
- Brainstorm Re-engagement methods

Outreach & Education

- Coordinate strategies and activities to increase the awareness of transportation providers and programs in Northern Colorado.

• **Today's Outcomes:**

- Review shared calendar
- NFRMPO/RideNoCo Upcoming Outreach
- Partner Upcoming Outreach
- Collaboration Opportunities
- Next Steps

11

11

Work Group Logistics



- **Choose a group:**
 - Put your preferred working group for today in the chat (Recruitment OR Outreach/Education)
 - We will split up the virtual meeting into Rooms based on the working group you pick for this meeting
 - More instructions on the following next slides
 - Keep in mind: There will be working group equivalents at the Larimer County Mobility Committee
- **In Working Group Rooms – 20 to 25 minutes**
 - Facilitated by NFRMPO staff and Co-chairs
- **Come back together as one group and report out – 10 minutes**



12

12

Outreach & Education Working Group



Discussion: 20 – 25 minutes

- **Today's Outcomes:**

- Review Shared Outreach Calendar
 - Google Calendar
- NFRMPO Outreach Plans
 - Weld Communal Meals
 - NFRMPO + RideNoCo boothing – Stampede tomorrow 4:30 – 10 pm
 - DriveNoCo Volunteer Recruitment
- Partner Outreach Plans
 - What's next on your outreach agenda?
- Opportunities for Collaboration
 - When/How could we collaborate to educate people about transportation options?
- Next Steps
 - Agenda suggestions for next meeting

13

13

Recruitment Working Group



Discussion: 20 – 25 minutes

- **Today's Outcomes:**

- Review proposed mission
The Recruitment Working Group will coordinate strategies and activities to increase active membership and participation in mobility committees.
- Review ideas from LCMC Recruitment members
- Review Inactive WCMC roster
- Brainstorm methods and strategies to re-engage Inactive members

14

14

Connect with the RideNoCo Team



Cory Schmitt

Mobility Manager
cschmitt@nfrmpo.org
(970) 999-0072



Hanna Johnson

Mobility Coordinator
hjohnson@nfrmpo.org
(970) 672-0677

RideNoCo

8am-5pm, Monday-Friday
mobility@nfrmpo.org
(970) 514-3636

15

2022 Mobility Calendar

-  LCMC
-  WCMC
-  MAPG
-  Joint Mobility

January

Sun	Mon	Tue	Wed	Thu	Fri	Sat
						1
2	3	4	5	6	7	8
9	10	11	12	13	14	15
16	17	18	19	20	21	22
23	24	25	26	27	28	29
30	31					

February

Sun	Mon	Tue	Wed	Thu	Fri	Sat
		1	2	3	4	5
6	7	8	9	10	11	12
13	14	15	16	17	18	19
20	21	22	23	24	25	26
27	28					

March

Sun	Mon	Tue	Wed	Thu	Fri	Sat
		1	2	3	4	5
6	7	8	9	10	11	12
13	14	15	16	17	18	19
20	21	22	23	24	25	26
27	28	29	30	31		

April

Sun	Mon	Tue	Wed	Thu	Fri	Sat
					1	2
3	4	5	6	7	8	9
10	11	12	13	14	15	16
17	18	19	20	21	22	23
24	25	26	27	28	29	30

May

Sun	Mon	Tue	Wed	Thu	Fri	Sat
1	2	3	4	5	6	7
8	9	10	11	12	13	14
15	16	17	18	19	20	21
22	23	24	25	26	27	28
29	30	31				

June

Sun	Mon	Tue	Wed	Thu	Fri	Sat
			1	2	3	4
5	6	7	8	9	10	11
12	13	14	15	16	17	18
19	20	21	22	23	24	25
26	27	28	29	30		

July

Sun	Mon	Tue	Wed	Thu	Fri	Sat
					1	2
3	4	5	6	7	8	9
10	11	12	13	14	15	16
17	18	19	20	21	22	23
24	25	26	27	28	29	30
31						

August

Sun	Mon	Tue	Wed	Thu	Fri	Sat
	1	2	3	4	5	6
7	8	9	10	11	12	13
14	15	16	17	18	19	20
21	22	23	24	25	26	27
28	29	30	31			

September

Sun	Mon	Tue	Wed	Thu	Fri	Sat
				1	2	3
4	5	6	7	8	9	10
11	12	13	14	15	16	17
18	19	20	21	22	23	24
25	26	27	28	29	30	

October

Sun	Mon	Tue	Wed	Thu	Fri	Sat
						1
2	3	4	5	6	7	8
9	10	11	12	13	14	15
16	17	18	19	20	21	22
23	24	25	26	27	28	29
30	31					

November

Sun	Mon	Tue	Wed	Thu	Fri	Sat
		1	2	3	4	5
6	7	8	9	10	11	12
13	14	15	16	17	18	19
20	21	22	23	24	25	26
27	28	29	30			

December

Sun	Mon	Tue	Wed	Thu	Fri	Sat
				1	2	3
4	5	6	7	8	9	10
11	12	13	14	15	16	17
18	19	20	21	22	23	24
25	26	27	28	29	30	31

2022 Meeting Dates:
 1/20: LCMC
 2/3: MAPG
 2/22: WCMC
 3/17: Joint
 4/7: MAPG
 4/26: WCMC
 5/19: LCMC
 6/2: MAPG
 6/28: WCMC
 7/21: LCMC
 8/4: MAPG
 8/30: WCMC
 9/15: LCMC
 10/6: MAPG
 10/25: Joint
 11/17: LCMC
 12/1: MAPG
 12/13: WCMC