

**Community Advisory Committee (CAC)
AGENDA**

**February 9, 2023
6:00 – 7:30 p.m.**

**Virtual:
(571) 317-3112
Code: 194-437-133**

<https://www.gotomeet.me/NFRMPO/nfrmpo-community-advisory-committee>

1. Call Meeting to Order, Welcome, Introductions

Discussion Topics:

2. Congestion Management Process

Medora Bornhoft, NFRMPO Transportation and Air Quality Planner, will present on the Congestion Management Process (CMP) which is being updated in 2023.

3. Data in Transportation Planning

Alex will review the topic of data used in the NFRMPO planning process.

4. 2050 RTP: Corridor Visioning

AnnaRose will share the final versions of the 2050 Corridor Visioning Activities presented at the January Meeting.

Next Meeting: March 9, 2023

**For any questions or accommodations, please contact AnnaRose Cunningham
at arcunningham@nfrmpo.org or (970) 419-9497.**

**Executive Summary of the
North Front Range Metropolitan Planning Organization
Community Advisory Committee**

January 12, 2023

Attendees: York, Brad Ragazzo

Staff: Alex Gordon, AnnaRose Cunningham

2050 RTP: Public Involvement

Cunningham asked for feedback on materials to give away during outreach. The group recommended chip clips, reusable bag for car, and bike or reflective lights.

Gordon introduced the 2050 Regional Transportation Plan and the vision planning process. Cunningham further explained the 10 Year Plan and provided context to the vision plans. York asked if the corridors were predominantly roadway-focused, and Gordon stated the Vision Plans will consider multimodal improvements. Ragazzo added the vision planning should be intuitive when looking at the maps about how people will be able to move across the corridors. Local plans and initiatives should be acknowledged.

Cunningham introduced the [Arc StoryMap collection](#), including the context Story Map and the visioning commenting tool. York suggested adding “(bus)” to the Transit travel option, and Cunningham stated she will add a multiple-mode travel option. Cunningham will clarify Recreation to include “exercise”. York asked to clarify what the “my vision for the corridor is...” asking. York recommended highlighting which community the different corridors cross, specifically with different colors. York recommended making communities grayscale on the fact sheets and adding more labels. The group discussed adding destinations for context about the geography.

Cunningham noted printed out materials will be available when NFRMPO staff table at libraries and around the region. Cunningham will send out the link to the Arc StoryMap and Gordon will update maps based on the feedback provided by the CAC.

Cunningham highlighted the RideNoCo Trip Discovery Tool has launched at <https://discover.ridenoco.co/#/>. The team worked through some questions about the tool, and they mentioned sharing the information with their networks.

York recommended reaching out to businesses to invite them to participate in the Community Advisory Committee.

The meeting adjourned at 7:33 p.m.



Image credit: Poudre Trail Facebook

Data in Transportation Planning

Community Advisory Committee




North Front Range
Metropolitan
Planning
Organization

February 9, 2023


1

Data in Transportation Planning


Data




Big Data




Local Data




Outreach



Analysis



Plans

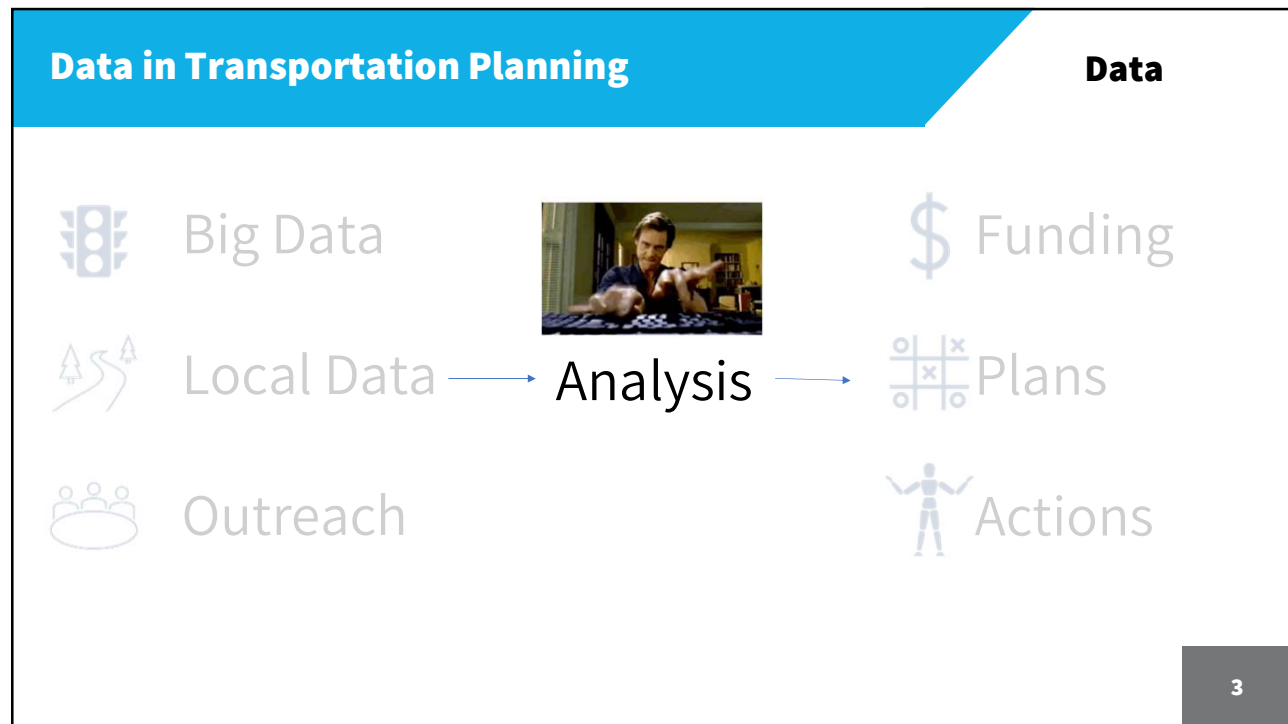


Actions

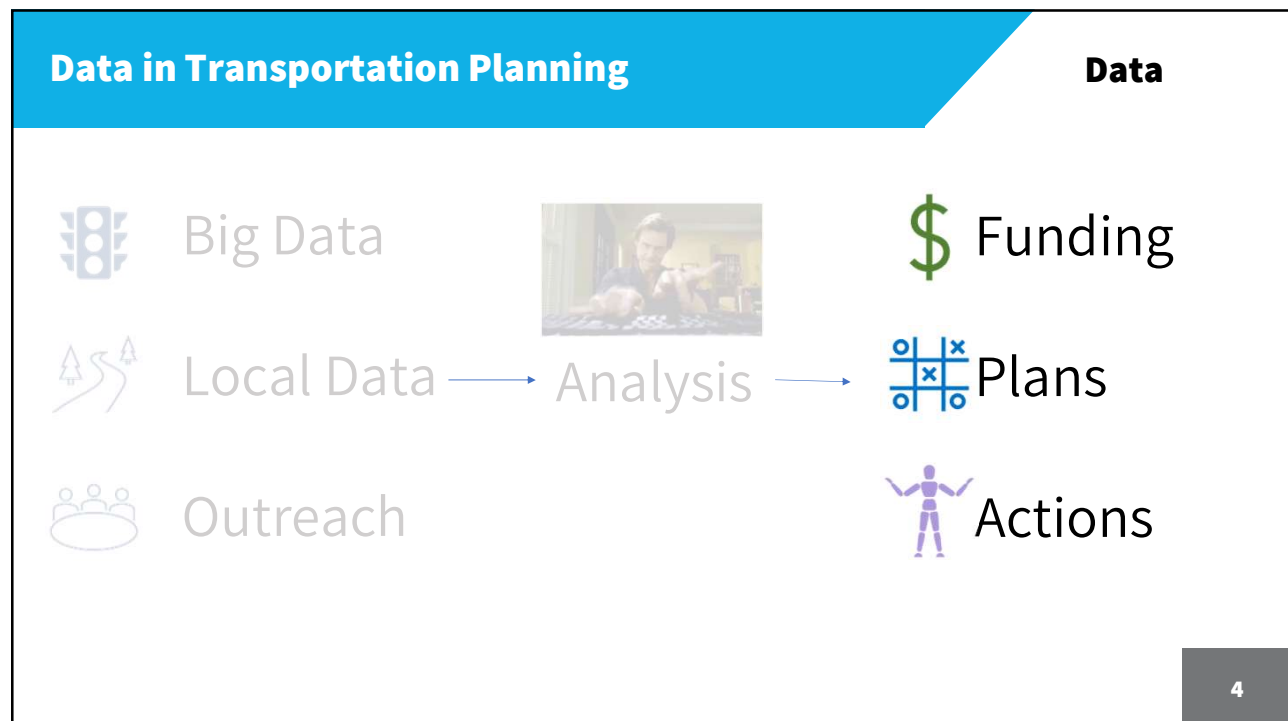
Funding

2

2



3



4

Big Data: Streetlight Data

Data



STREETLIGHT DATA



Origin-Destination for multiple modes

Get hourly O-D data for motorists, cyclists, or pedestrians for any geographic zone, from entire cities to city blocks to individual roads or intersections.



Volume, speed, duration, and more

Need AADT for a local traffic study or a whole region? Need to measure congestion or inform your constituents? Our 24/7 metrics are all on-demand.



Demographics, social equity

Struggling to collect robust survey data or constituent input? Use our income, race, and mobility metrics at the zone level to ensure equitable access.

5

5

Big Data: Example

Data

LINKNoCo

UNITING THE NORTH FRONT RANGE

“Over 21,100 daily trips occur between the Loveland and Greeley areas, according to StreetLight Data.

Within Loveland, the Centerra development and surrounding area is the greatest draw for trips to/from Greeley at over 11,000 daily trips. By comparison, trips between the Loveland core and Greeley total under 7,000 daily. Additionally, the Loveland core to Centerra area has a strong trip pattern.

Nearly 25,000 trips occur daily between these areas, suggesting this alignment could benefit from the connection to the existing COLT line that currently serves the Centerra area.”

6

6

Big Data: NPMRDS

Data

- National Performance Management Research Data Set

The National Performance Management Research Data Set in a Nutshell

Data Providers: INRIX, TomTom, HERE

Funded By: FHWA

Purpose: Support MAP-21 regulation and ongoing transportation system mobility performance measurement

Users: Federal, State, and regional agencies

Data Source: Probe vehicles

Metrics: Speed, travel time, and static AADT (2017)

Data Latency: One-month old

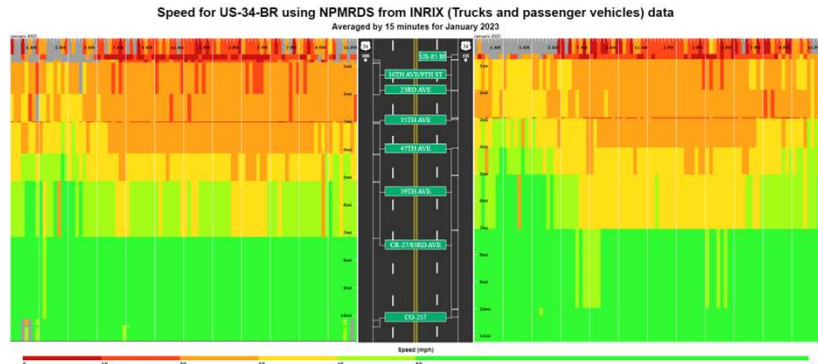
Lowest Temporal Resolution: 5 minutes

Spatial Resolution: TMC level (about ½ mile to 1 mile in urban/suburban areas and 5-10 miles in rural areas)

Geographical Coverage: NHS

Modal Coverage: Truck and passenger car Data Format: CSV and ArcGIS shapefiles (road segment details)

Licensing Agreement: Required



7

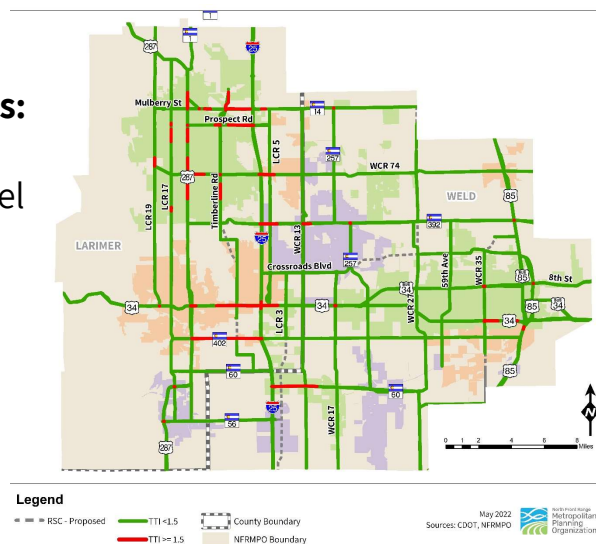
7

Big Data: Application

Data

Congestion Mitigation Process:

- Which corridors have a Travel Time Index of 1.5 or higher?
- What do trends say about potential futures?



8

8

Local Data: Travel Time Collectors

Data

BlueTOAD



- **Real Time Travel Collectors**
 - Where is congestion happening now?
 - How do we adjust traffic signals based on current need?
 - This allows for in-depth origin-destination studies, trip length analysis, TDM modeling, and signal timing optimization.

9

9

Local Data: Travel Surveys

Data

FRONT RANGE TRAVEL COUNTS: NFRMPO HOUSEHOLD SURVEY

*Final Report
April 2010*



NuStats

2010-2011 Survey Period: June 2010 - June 2011
2010-2011 Survey Period: June 2010 - June 2011
Contact: Nancy Bledsoe, NFRMPO, Project Director or Data Analyst, Project Manager



- Sampling of residents who complete trip diaries or respond to onboard surveys
- Shifting to using an app
- Understand beyond just commute trips and how people move around the region

10

10

Local Data: Automatic Passenger Counters

Data



Image credit: <https://v-count.com/passenger-counting-8-benefits-of-automated-passenger-counting-systems-for-transportation/>

- Where are people boarding and alighting?
- Most/least used stops
- Input to analyze better use of funds

11

11

Outreach

Data



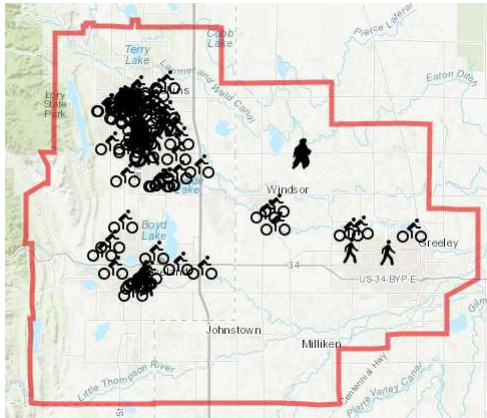
You know your communities better than we do.

- How do you interact with your local streets, trails, transit?
- What would make things better or worse?
- Get better real time data

12

12

Data



- People avoid walking and biking in certain places because they do not feel safe
- Crash data is behind the times

13